

Arkansas State Music Teachers Association
Written Theory Test
Level I

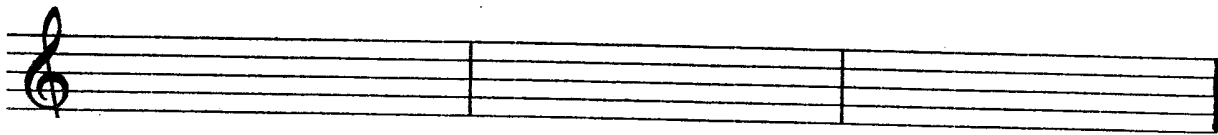
Student No. _____

Score _____

1. Write the letter names of the musical alphabet **GOING DOWN** by 3rds. (SKIPS). (8)

A G B

2. On the staff below, draw **WHOLE NOTES** on the correct line or space for each letter name given below the staff. **LOOK AT THE CLEF SIGN!** (6)



G B C E A D

3. Write the letter names of the notes on the the lines below the staff. **LOOK AT THE CLEF SIGN!** (6)



4. Name these intervals (2nd, 3rd, 4th, 5th) on the blank lines below them. (6)



5. Write these dynamic markings from left to right in order from softest to loudest: mf p f mp (4)

6. The **BOTTOM** (lower) number of a time signature ($2/4$, $3/4$, $4/4$, etc.) tells us: (CIRCLE the correct answer.) (4)

- A. How many notes there are in each measure
- B. How many beats there are in each measure
- C. What kind of note gets one beat

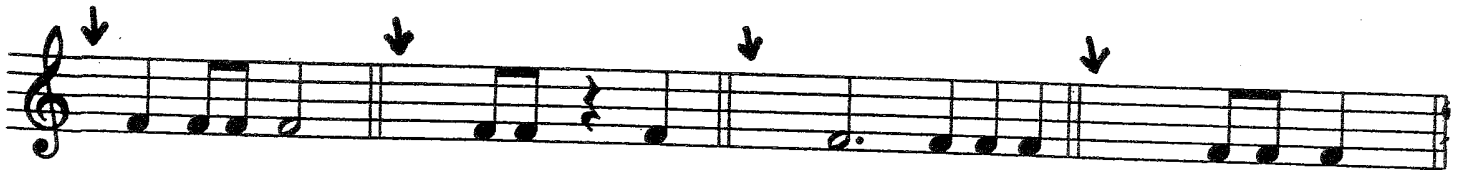
7. Write the number of beats each note or rest gets in $4/4$ time. (9)

= ____ beat	= ____ beats	= ____ beats
= ____ beats	= ____ beat	= ____ beat
= ____ beat	= ____ beats	= ____ beats

8. Turn these whole notes into **HALF** notes by adding a **STEM** to each one. REMEMBER THE STEM RULE! (4)



9. Complete the time signatures (example: $2/4$) under the arrows. (8)



10. Draw barlines where they are needed on the staff. LOOK AT THE TIME SIGNATURE! (10)



11. Add (write in) the ONE missing NOTE in each measure.

(8)



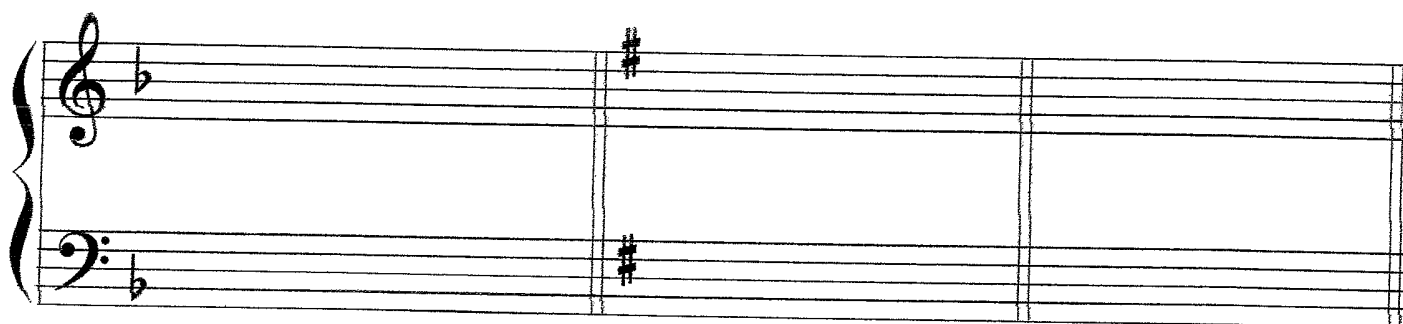
12. Write the letter name of the triads (chords) on the blank lines beneath them. LOOK AT THE CLEF SIGN!

(6)



13. Below are three key signatures. Write the letter name of each major key on the blank line below it.

(6)



_____ Major

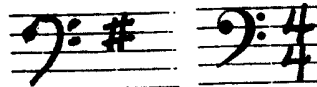
_____ Major

_____ Major

14. Circle the correct sign (symbol) for each musical term. (10)

A. Moderately soft mf mp

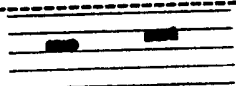
F. Key Signature



B. Moderately loud mp mf

G. Play an octave higher D.S. 8va

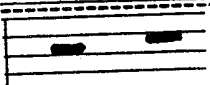
C. Whole rest



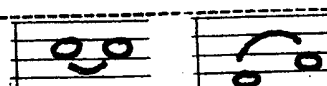
H. Eighth rest



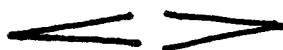
D. Half rest



I. Tie

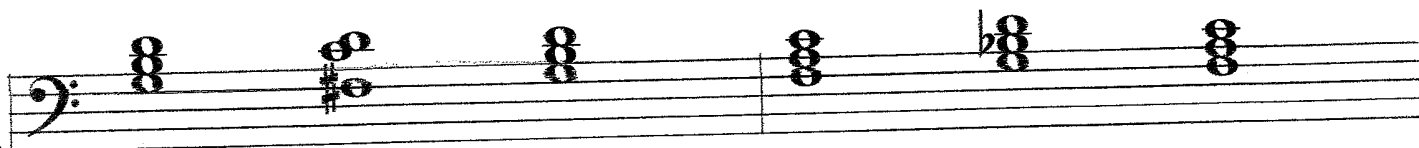


E. Crescendo



J. Return to the sign D.C. D.S.

15. Circle the correct I V7 I chord progression below. (4)



16. Circle the correct word to complete this sentence: (1)

The una corda pedal is the _____ pedal.

LEFT or MIDDLE or RIGHT

BONUS QUESTION (5)

On the grand staff below write the key signature of **F MAJOR** in **BOTH CLEFS**.

