

Arkansas State Music Teachers Association *al*
 Written Theory Test
 Level II

Student No. _____

Score _____

1. Write the number of the term on the blank line next to its definition. (10)

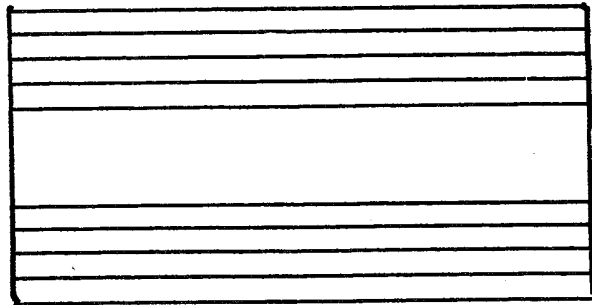
- | | | |
|----------------|-------|---|
| 1. triplet | _____ | a happy, fast speed |
| 2. subdominant | _____ | a moderate (medium) tempo |
| 3. allegro | _____ | the fourth degree of the scale |
| 4. moderato | _____ | a comfortable walking speed |
| 5. andante | _____ | a group of three notes to be performed in place of two of the same kind |

2. A) Draw a TREBLE CLEF SIGN in the first measure. THEN: (10)
 B) Write the letter names of the notes on the blank lines.






3. A) Draw a BASS CLEF SIGN in the first measure. THEN: (10)
 B) Write the letter names of the notes on the blank lines.

4. Write these dynamic marks from left to right in order of softest to loudest: (6)
 f mp ff pp mf p

5. On the grand staff below, add a treble clef, bass clef, and a brace. (6)



6. Write the number of beats each note, rest, or group of notes equals. (5)

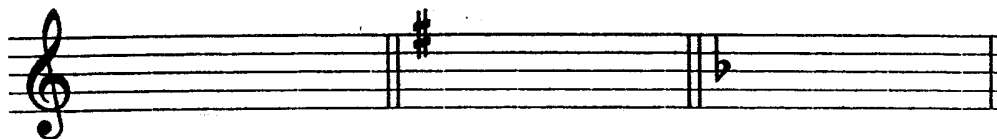
 = ____
  = ____
  = ____
  = ____
  = ____

7. Below the arrows, add the ONE missing NOTE in each measure. (5)

8. Below the arrows, write in the missing time signatures for each measure. (5)

9. Below the arrows, draw the ONE missing REST in each measure. (4)

10. Write the letter name of each key on the line below its key signature. (6)



11. Write the letter name and quality (ex.: c minor) of each five-finger pattern (pentascale). (10)

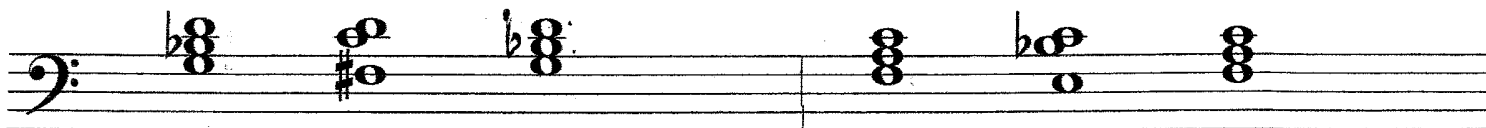




12. Circle ONLY the MINOR triads (chords) below. (3)



13. Circle the correct Roman Numerals for each cadence. (4)



I V7 I or i V7 i

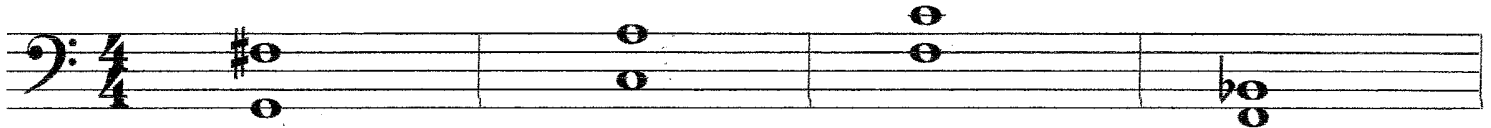
I V7 I or i V7 i

Level II - page 4

14. Write the number of the correct definition on the blank line beside each symbol or term. (6)

- | | |
|---------------------|---|
| _____ D.C. | 1. Repeat from the sign |
| _____ D. S. | 2. The end |
| _____ Fine | 3. Repeat from the beginning and play to the Coda |
| _____ Coda | 4. Repeat from the beginning |
| _____ D. C. al Coda | 5. Repeat from the sign and play to the Coda |
| _____ D. S. al Coda | 6. Closing section of a piece |

15. Write the number name (2nd, 3rd, 4th, etc.) of the intervals below. (8)



16. Circle the letters which represent **BINARY FORM**: AB or ABA (1)

17. Circle the letters which represent **TERNARY FORM**: AB or ABA (1)

BONUS QUESTION (5)

Using **WHOLE NOTES** write the **f** minor pentascale on the staff below.
LOOK at the clef sign!

