

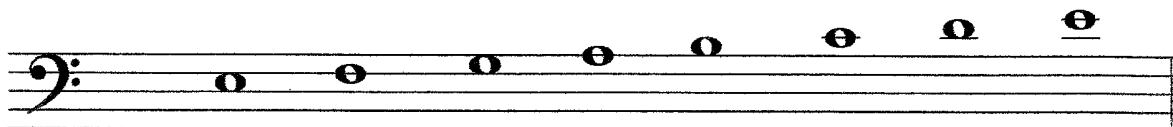
Level III – page 2

6. Circle the correct Roman Numerals for each cadence. (6)



I - V7 - I I - V7 - I I - V7 - I
 OR i - V7 - i i - V7 - i i - V7 - i

7. On the staff below: (*Be sure to complete all 3 parts, A, B, and C.)
- A. Place sharps before notes where needed to make a Major scale. (4)
 - B. Mark the half steps with slurs (or circle them) where they occur. (2)
 - C. Write the letter name of the tonic, subdominant, and dominant notes on the blank lines below the scale. (3)

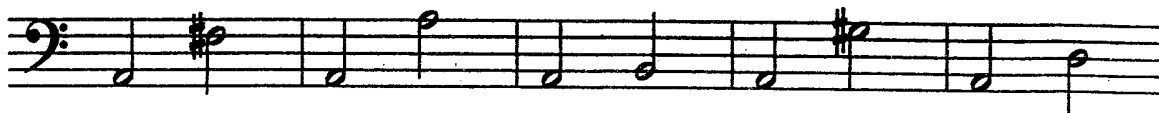


The tonic note is ___ The subdominant note is ___ The dominant note is ___

8. Name the MAJOR key for each key signature below. (10)



9. Write the name of the intervals (P1, M2, M3, P4, P5, M6, M7, P8) (5)
 on the blank lines below them.



10. Write the number of the correct definition on the blank lines by the terms or symbols. (6)

- | | |
|----------|----------------------------|
| ___ pp | 1. Binary form |
| ___ 15ma | 2. Very soft |
| ___ ABA | 3. A sudden, strong accent |
| ___ AB | 4. Very loud |
| ___ sfz | 5. Play 2 octaves higher |
| ___ ff | 6. Ternary form |

11. Transpose (rewrite) this melody UP a Major 2nd. You may use either accidentals or key signature. (7)

The first staff contains a melody in G major (one sharp) on a treble clef. The notes are G4 (quarter), A4 (quarter), B4 (quarter), C5 (quarter), D5 (quarter), E5 (quarter), F#5 (quarter), G5 (quarter), and A5 (quarter). The second staff is a blank treble clef staff with a key signature of one sharp (F#) for transposition.

12. Write W for whole step or H for half step on the lines below each example. (5)

The staff contains five measures of whole notes. The notes are: G2 (natural), A2 (natural), B2 (natural), C3 (natural), D3 (natural), E3 (natural), F3 (natural), G3 (natural), A3 (natural), B3 (natural), C4 (natural), D4 (natural), E4 (natural), F4 (natural), G4 (natural). Below the staff are five blank lines for labeling the intervals.

13. Write the number of the correct definition on the blank beside each term. (13)

- | | |
|---------------------|---|
| ___ simple meters | 1. little by little |
| ___ sempre | 2. major 2 nd |
| ___ vivace | 3. the fourth scale degree of a key |
| ___ major scale | 4. composition played or sung by 3 people |
| ___ half step | 5. have 2, 3, or 4 as the upper number |
| ___ whole step | 6. have upper number that is a multiple of 3 |
| ___ compound meters | 7. always |
| ___ dominant | 8. Tonic-W-W-H-W-W-W-H |
| ___ subito | 9. the fifth scale degree of a key |
| ___ trio | 10. quick, lively, faster than allegro |
| ___ sforzando | 11. semitone (found from one key to the next with no keys in between) |
| ___ subdominant | 12. suddenly |
| ___ poco a poco | 13. sudden, strong accent |

14. Write the letter names of the notes on the blank lines. LOOK AT THE CLEF SIGNS! (10)



BONUS QUESTION (5)

Name two keyboard instruments used in the Baroque period.
