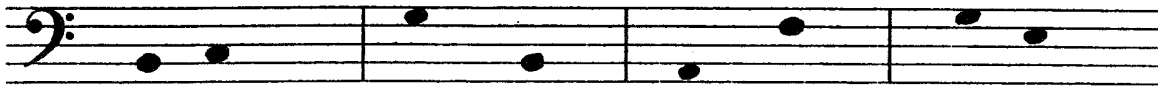


Arkansas State Music Teachers Association
Written Theory Test
Level IV

Student No. _____

Score _____

1. On the staff below, add **STEMS, BEAMS, or FLAGS** to make the type of notes indicated below each measure. (4)



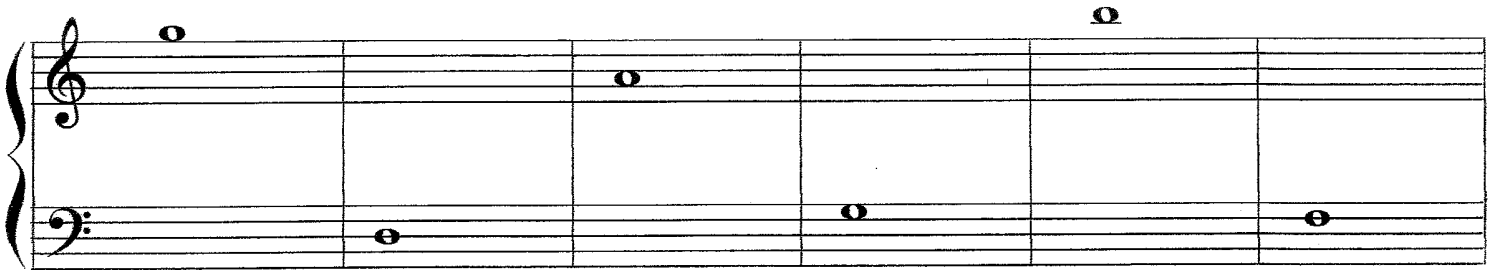
Sixteenth notes
Use **BEAMS**

Sixteenth notes
Use **FLAGS**

Eighth notes
Use **FLAGS**

Eighth notes
Use **BEAMS**

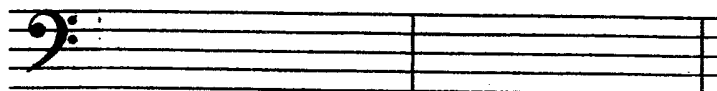
2. Rewrite the given note in each measure an **OCTAVE LOWER**. (6)



3. Write the name of each interval (P1, M2, M3, P4, P5, M6, M7, P8) on the blank line below it. (6)



4. Transpose (rewrite) this melody **DOWN** a Major 2nd. You may use accidentals or key signature. (5)



Level IV - page 2

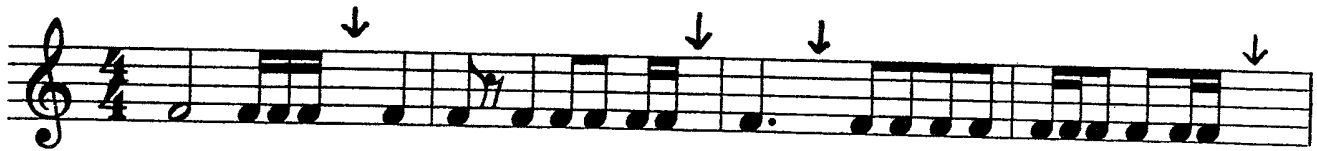
5. Write in the missing top number of each time signature.

(8)



6. A) Draw the ONE note which has been left out of each measure.

(4)



B) Draw the ONE rest which has been left out of each measure.

(4)



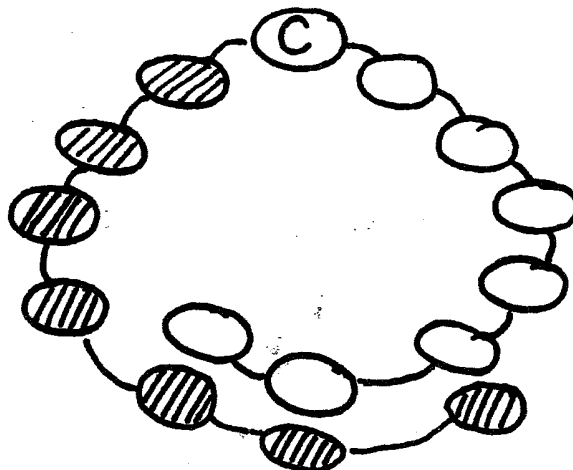
7. Place barlines where they are needed below.

(4)

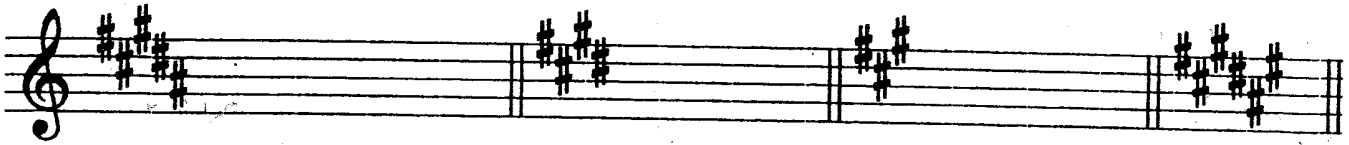


8. Complete the circle of 5ths for sharp major keys.

(7)

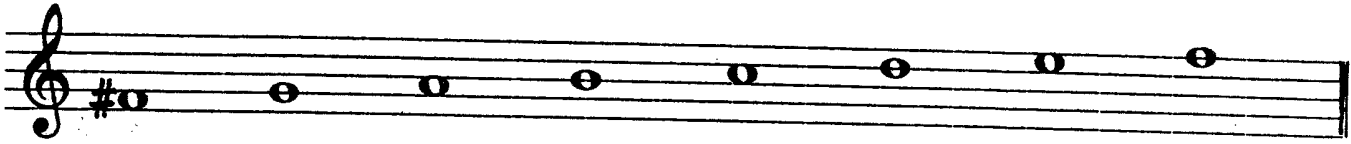
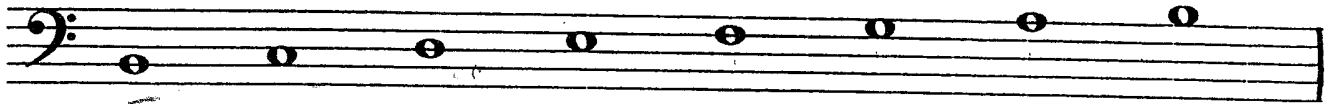


9. Name the Major key for each key signature. (8)

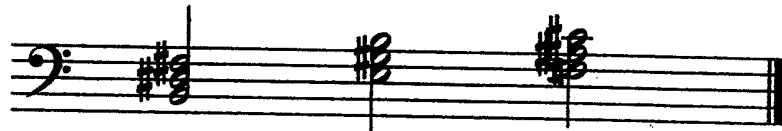


Key of: _____

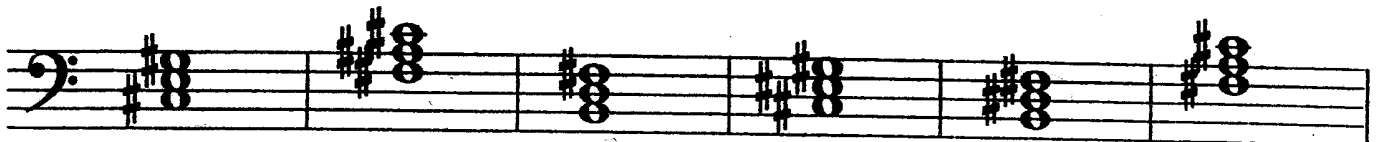
10. On the treble or bass staves below, place sharps (#) where needed before the notes to form the Major scale indicated by each tonic (first note). LOOK at CLEF SIGNS! (9)



11. Three root position triads (chords) in the key of B Major are given below. On the blank lines, write the correct Roman numerals to label the triads as tonic, subdominant, and dominant. (3)



12. On the blank lines, write the letter names of the triads (chords). (Ex.: B=B Major; b=b minor) (6)



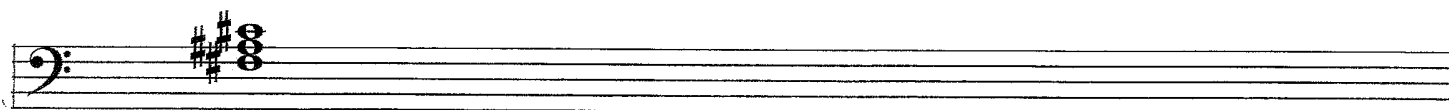
13. Four cadences are written below. Circle the TWO Major Plagal (I-IV-I) cadences. (6)



14. Write the number of the correct definition on the blank line beside each musical term. (10)

- | | |
|-------------------------|---|
| ___ una corda | 1. less |
| ___ tre corde | 2. in a similar manner |
| ___ cantabile | 3. more |
| ___ syncopation | 4. (3 strings) release soft pedal |
| ___ piu | 5. motion |
| ___ natural minor scale | 6. deliberate disturbance of the normal pulse |
| ___ simile | 7. (1 string) – use soft pedal |
| ___ mosso | 8. singing style or manner |
| ___ meno | 9. sweetly |
| ___ dolce | 10. Tonic W H W W H W W |

15. Write the given root position triad (chord) in first and second inversions. (6)



Root

1st inversion

2nd inversion

16. Circle the group of letters that correctly spells the "a" natural minor scale. (4)

ABCDEFG#A OR ABCDEFGA

BONUS QUESTION (5)

Circle the group of letters which represent rondo form.

ABABA or ABCBA or ABACA