

**Arkansas State Music Teachers Association**  
**Written Theory Test**  
**Level VII**

Student No. \_\_\_\_\_

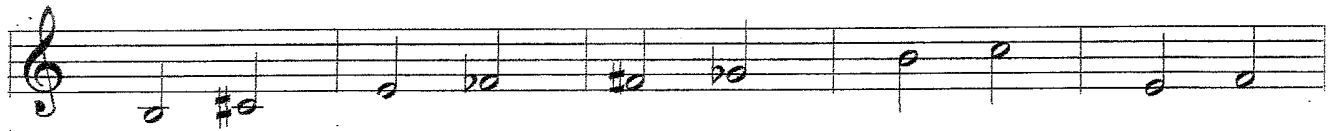
Score \_\_\_\_\_

1. Place an X in the blank by the correct name for the major keys below. (10)

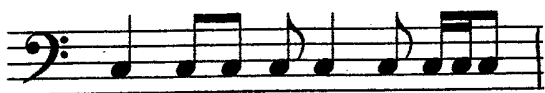


- |        |        |        |        |        |
|--------|--------|--------|--------|--------|
| ___ F  | ___ Eb | ___ Ab | ___ Db | ___ Bb |
| ___ Ab | ___ Db | ___ F  | ___ Bb | ___ Eb |
| ___ Eb | ___ Gb | ___ Db | ___ Ab | ___ Gb |

2. Circle the intervals that are ENHARMONIC among the examples below. (5)



3. Circle the correct choice for the time signature for each example. (10)



- 5 OR 3  
4      4



- 3 OR 9  
4      8



- 3 OR 6  
4      8



- 12 OR 4  
8      4

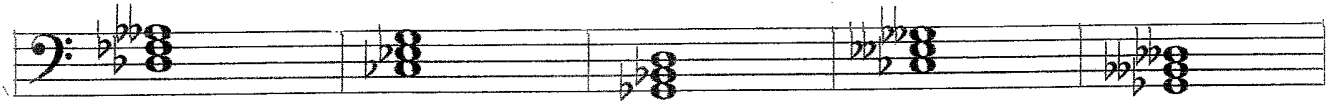
4. Circle the correct term for the THIRD scale degree of any key. (4)

- Subdominant      Leading tone      Mediant      Supertonic



Level VII – page 3

10. Write d for diminished or A for Augmented beneath these triads. (5)



11. **FIRST** – write the Roman numeral chord analysis beneath each cadence.

**THEN** – label each cadence type as plagal, authentic, or extended authentic on the longer blank line beneath each cadence. (14)



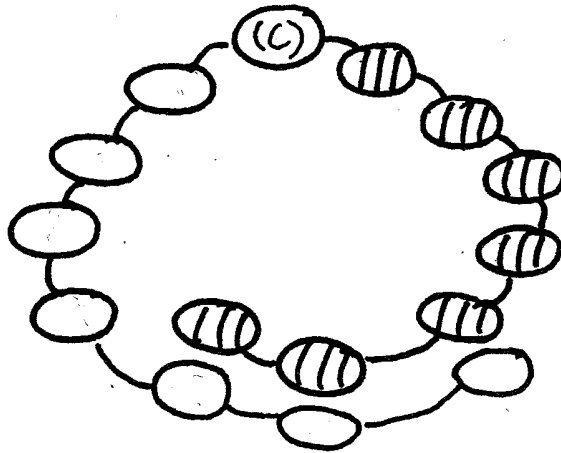
(1) → \_\_\_\_\_  
 (2) → \_\_\_\_\_

12. Matching. Write the number of the appropriate definition on the blank line by the term. (10)

- |                       |  |
|-----------------------|--|
| ___ animato           | 1. tones that do not belong to the chord |
| ___ giocoso           | 2. the 2nd scale degree                  |
| ___ retrograde        | 3. animated, spirited                    |
| ___ morendo           | 4. scale built entirely of whole steps   |
| ___ nonharmonic tones | 5. jocose, humorous                      |
| ___ con brio          | 6. backwards                             |
| ___ whole tone scale  | 7. fading away, dying out                |
| ___ polyphony         | 8. the 6th scale degree                  |
| ___ supertonic        | 9. with vigor, spirited                  |
| ___ submediant        | 10. several parts move independently     |

13. Complete the circle of 5ths for the MAJOR FLAT keys below.

(7)



---

BONUS QUESTION

(5)

Circle TRUE or FALSE.

Enharmonic tones are notes that look alike but sound different.

TRUE

FALSE