

OK

**Arkansas State Music Teachers Association**  
**Written Theory Test**  
**Primary A**

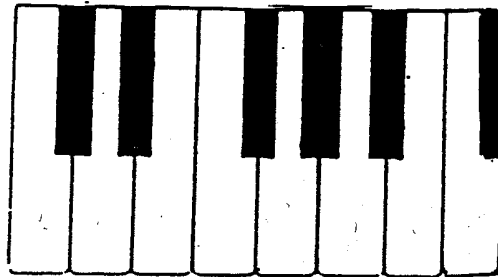
Student No. \_\_\_\_\_

Score \_\_\_\_\_

1. Write the letters of the music alphabet going UP. The letter "A" is already written for you. (6)

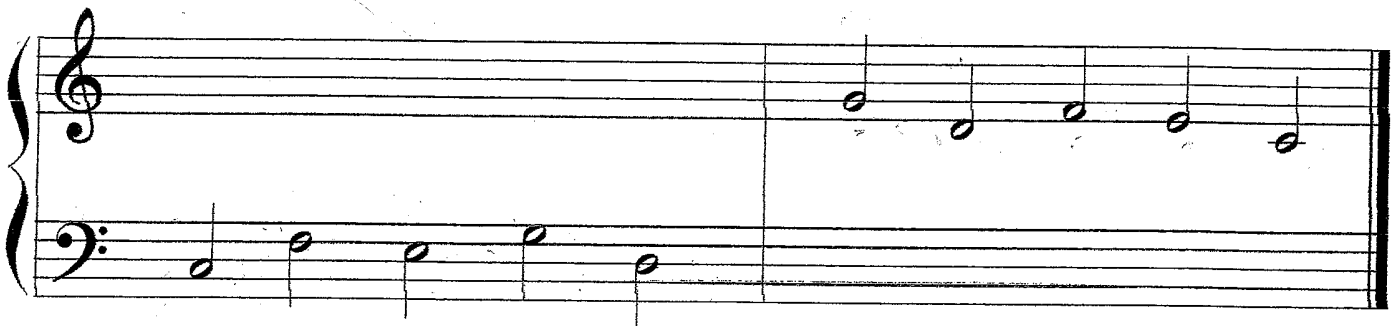
A \_ \_ \_ \_ \_

2. Write the letter names of all the white keys on the picture of the keyboard. (8)



3. Name two composers: \_\_\_\_\_ (4)

4. Write the letter name of each note on the line beneath it. LOOK AT THE CLEF SIGNS. (10)



5. A three (3) note chord is called: (Circle the correct word below.)

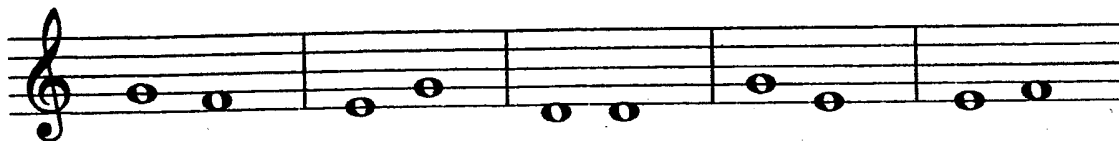
Interval

Triad

Accent

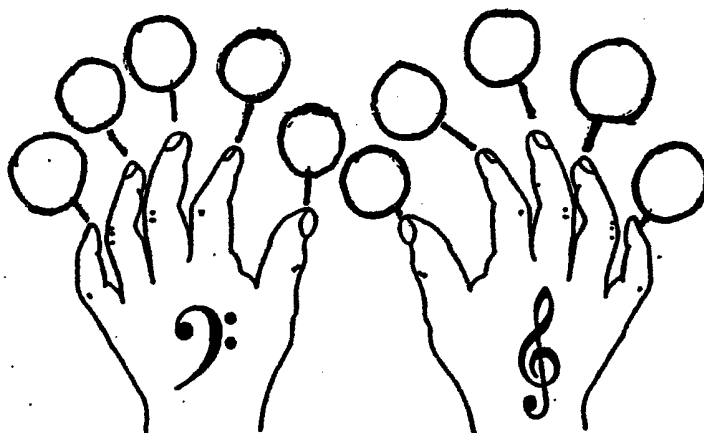
(4)

6. The **SECOND** note in each measure moves **UP**, **DOWN**, or stays the **SAME**. Circle the correct word below each measure. (10)

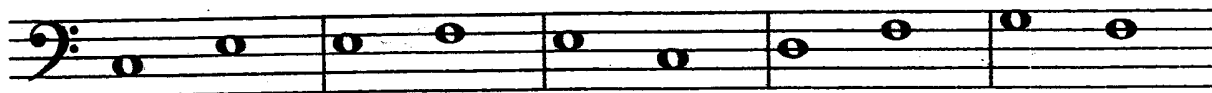


UP	UP	UP	UP	UP
DOWN	DOWN	DOWN	DOWN	DOWN
SAME	SAME	SAME	SAME	SAME

7. Write the finger numbers for the left and right hands below. (10)



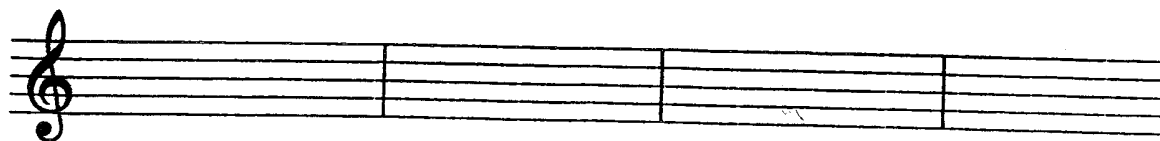
8. The 2 (two) notes in each measure move as a **STEP** or **SKIP**. Circle the correct word below each measure. (5)



STEP	STEP	STEP	STEP	STEP
SKIP	SKIP	SKIP	SKIP	SKIP

Primary A – page 3

9. Draw the note named below each measure. You may use any line or space on the staff. (8)



Whole note

Quarter note

Dotted half note

Half note

10. How many beats does each note get? Circle the correct number. (8)

○ = 1 2 3 4

◐ = 1 2 3 4

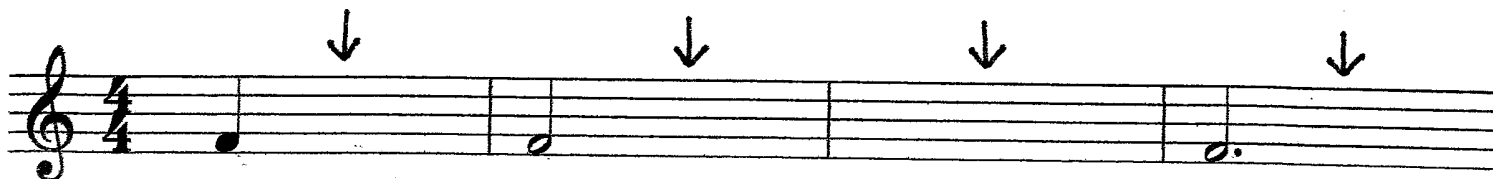
◑ = 1 2 3 4

◒ = 1 2 3 4

11. Draw barlines where they are needed. LOOK AT THE TIME SIGNATURE! (4)



12. Draw the ONE missing NOTE in each measure to make it complete. LOOK AT THE TIME SIGNATURE! (4)



13. Write the letter name of this triad (chord) on the line below it. (2)



\_\_\_\_\_

14. Each measure has 2 (two) notes which are either slurred or tied. CIRCLE the correct word (TIE or SLUR) below each measure. (5)



TIE	TIE	TIE	TIE	TIE
SLUR	SLUR	SLUR	SLUR	SLUR

15. Circle the correct sign for each musical term (word). (12)

- A. Treble Clef     $\text{basso}$      $\text{treble}$
- B. Bass Clef      $\text{treble}$       $\text{basso}$
- C. Forte (loud)     $p$       $f$
- D. Repeat          $\{$       $||$
- E. Piano (soft)     $p$       $f$
- F. Accent          $\frown$      $>$

**BONUS QUESTION** (5)

Look at these signs/symbols. Draw a circle around the TIME SIGNATURES.

