

ASMTA THEORY LEVEL ONE - PIANO

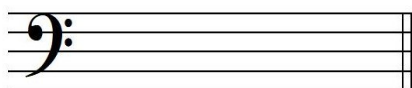
Student's Name _____

Written Score	
Aural Score	
TOTAL SCORE	

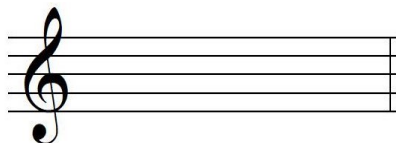
Teacher's Name _____

Write the letter name of each note on the line below.

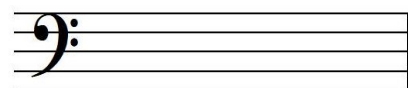
Draw the notes on the staff. Use whole notes.



B



D



F

Label the Major key signatures.



_____ Major



_____ Major



_____ Major

TURN TO THE NEXT PAGE

ASMTA THEORY LEVEL ONE - PIANO

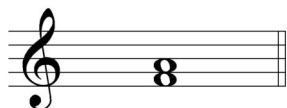
Circle the correct pattern of whole steps and half steps used in a Major scale.

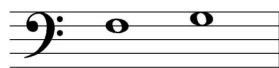
WWHWWWH

WHWWWHW

WWHHWWH

Label the intervals as a second (2nd) or third (3rd).





Use a word from the word list to complete each sentence.

WORD LIST

flat	fermata
triad	ritardando
crescendo	melodic interval

A _____ lowers a note one half step.

☞ is the symbol for _____, which means to hold a note or rest for extra value.

A _____ is the distance between two notes which are played separately, creating a melody.


A _____ is a chord of three notes, consisting of a root, 3rd, and 5th above the root.

TURN TO THE NEXT PAGE

ASMTA THEORY LEVEL ONE - PIANO

Match the terms with the definitions. Write the letter of the correct definition on the blank line.

TERMS

_____ diminuendo (dim.) 

_____ key signature

_____ octave

_____ natural

_____ ritardando (rit.)

_____ half step

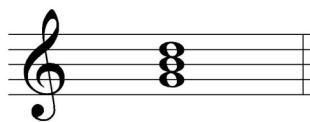
_____ accidental

_____ whole step

DEFINITIONS

- A. Cancels a sharp or a flat
- B. The closest distance between two notes
- C. To play gradually softer
- D. To play gradually slower
- E. An interval of eight notes
- F. Sharps or flats in a specific order and pattern after a clef sign
- G. A sharp, a flat, or a natural sign used in front of a note to change the note for one measure
- H. Equal to two half steps

Name the Major triads.



_____ Major



_____ Major

TURN TO THE NEXT PAGE

ASMTA THEORY LEVEL ONE - PIANO

Use the music example below to answer the following questions. The measures are numbered. Circle the correct answer or fill in the blank for each question.

The musical notation shows a single staff in bass clef with a key signature of one flat and a 3/4 time signature. The first measure is marked *mf* and contains three quarter notes. The second measure has a slur over four eighth notes. The third measure contains a quarter note and a dotted quarter note, with a circle around the quarter note. The fourth measure contains a quarter note, a dotted quarter note, and a half note, with a repeat sign at the end circled.

The time signature for the music example indicates there are _____ beats in each measure.

What is the meaning of the symbol circled in measure 4?

The end

To play again

What is the definition of the dynamic marking below measure 1?

Loud

Soft

Medium loud

Medium soft

The music example is written in which clef?

Treble Clef

Bass Clef

How should the notes in measures 1 and 3 be played?

Legato

Staccato

What is the interval circled in measure 3?

2nd

3rd

The line above the notes in measure 2 indicate to play the music legato or staccato?

Legato

Staccato

END OF WRITTEN EXAM

ASMTA AURAL AWARENESS LEVELS 1 & 2

Aural Score

Student's Name _____

- | | |
|---------------------|------------------|
| 1. Same | Different |
| 2. Staccato | Legato |
| 3. Higher | Lower |
| 4. Piano, <i>p</i> | Forte, <i>f</i> |
| 5. Legato | Staccato |
| 6. High | Low |
| 7. Higher | Lower |
| 8. Second | Third |
| 9. Gradually louder | Gradually softer |
| 10. Higher | Lower |

END OF AURAL AWARENESS EXAM