

ASMTA THEORY LEVEL TWO - PIANO

Student's Name _____

Written Score	
Aural Score	
TOTAL SCORE	

Teacher's Name _____

Write the letter name of each note on the line below. Use accidentals as needed.

Draw the notes on the staff. Use whole notes.

B

F

G

D

Draw the correct answer in the box.

Flat sign

Natural sign

Eighth rest

Dotted quarter note

Dotted half note

Half rest

Single eighth note

Accent

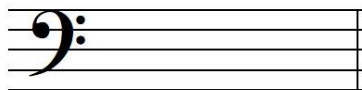
TURN TO THE NEXT PAGE

ASMTA THEORY LEVEL TWO - PIANO

Draw the Major key signatures.

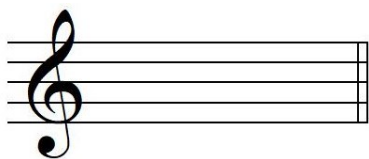


F Major

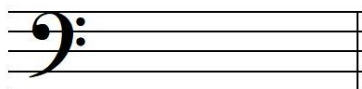


G Major

Draw the triads. Use whole notes.



G Major

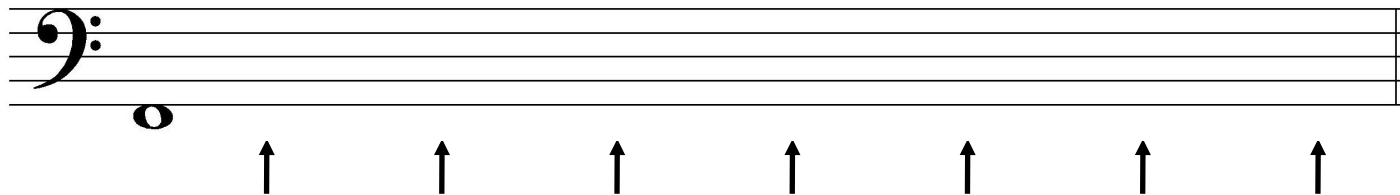


F Major

Write the pattern of whole steps and half steps used in a Major scale.

Write W for whole step and H for half step.

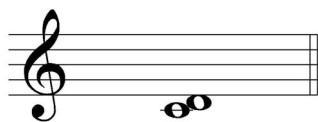
Starting with the note provided, draw a Major scale one octave going up. Draw one whole note on the staff above each arrow. Use accidentals as needed. Do not use a key signature.



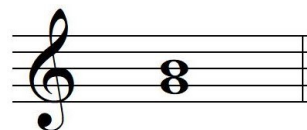
TURN TO THE NEXT PAGE

ASMTA THEORY LEVEL TWO - PIANO

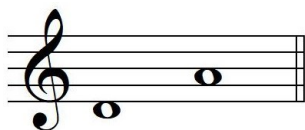
Label the intervals. Use 2nd, 3rd, or 4th.

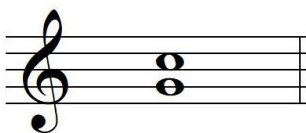


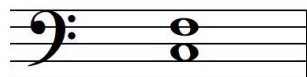




Label the intervals as harmonic or melodic.







Match the terms with the definitions. Write the letter of the correct definition on the blank line.

TERMS

_____ D. C. al Fine

_____ 8va

_____ tie

_____ parallel motion

_____ accent

_____ loco

_____ allegro

_____ contrary motion

DEFINITIONS

- A. When written above notes, it means to play the notes an octave higher. When written below notes, it means to play notes an octave lower
- B. Music moving in the same direction
- C. Return to the beginning and play to Fine
- D. A quick, fast tempo
- E. Music moving in the opposite direction
- F. A note that is played louder than the notes around it
- G. In the written octave
- H. Two notes of the same pitch that are joined together by a curved line; to hold the note for the combined value of both notes

TURN TO THE NEXT PAGE

ASMTA THEORY LEVEL TWO - PIANO

Use the music example below to answer the following questions. The measures are numbered. Circle the correct answer or fill in the blank for each question.

Andante

mp

The music example is in the key of _____ Major.

What is the meaning of the dynamic marking below measure 1?

Medium soft

Soft

Medium loud

What is the interval circled in measure 2?

2nd

3rd

4th

What is the symbol under measure 3 and 4?

Crescendo

Diminuendo

Ritard

What is the symbol over the note in measure 4?

Tie

Fermata

Slur

What is the meaning of the tempo marking in measure 1?

A walking tempo

A quick, fast tempo

A medium or moderate tempo

What kind of rests are in measure 3?

Half rests

Eighth rests

Quarter rests

END OF WRITTEN EXAM

ASMTA AURAL AWARENESS LEVELS 1 & 2

Aural Score

Student's Name _____

- | | |
|---------------------|------------------|
| 1. Same | Different |
| 2. Staccato | Legato |
| 3. Higher | Lower |
| 4. Piano, <i>p</i> | Forte, <i>f</i> |
| 5. Legato | Staccato |
| 6. High | Low |
| 7. Higher | Lower |
| 8. Second | Third |
| 9. Gradually louder | Gradually softer |
| 10. Higher | Lower |

END OF AURAL AWARENESS EXAM