

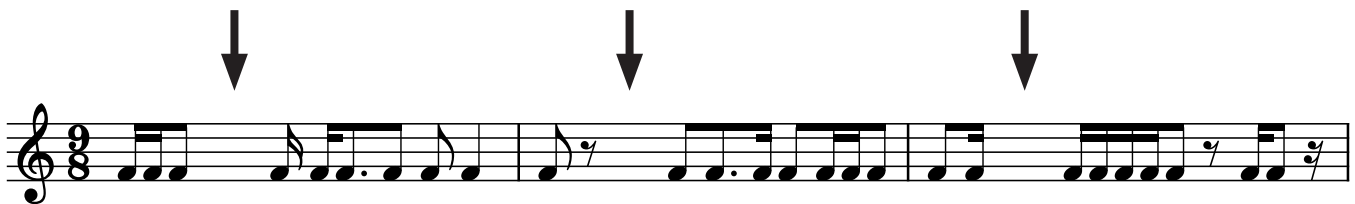
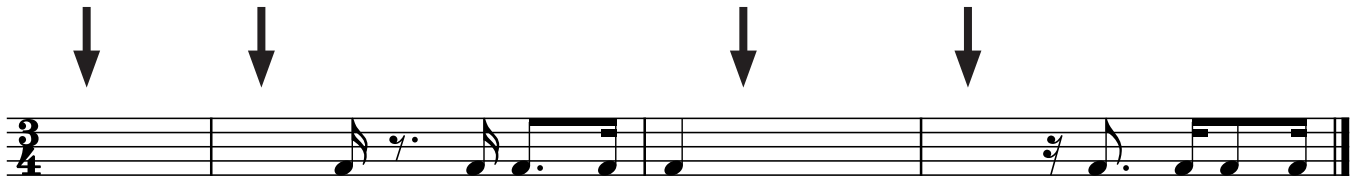
Theory Level 6 - Double-Sharp and Double-Flat Note Naming and Enharmonic Notes

Write the letter name of each note on the line below. Do not use enharmonic spellings. Use accidentals as needed.

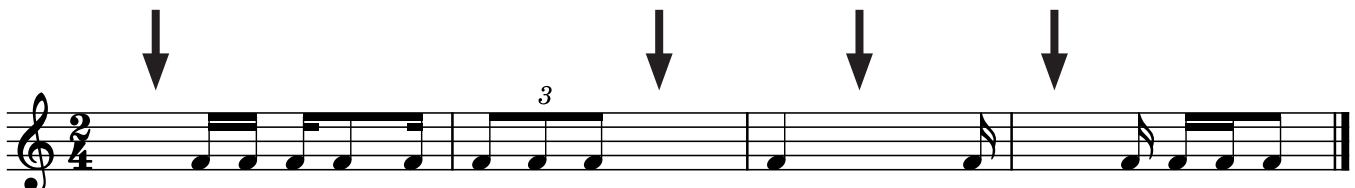
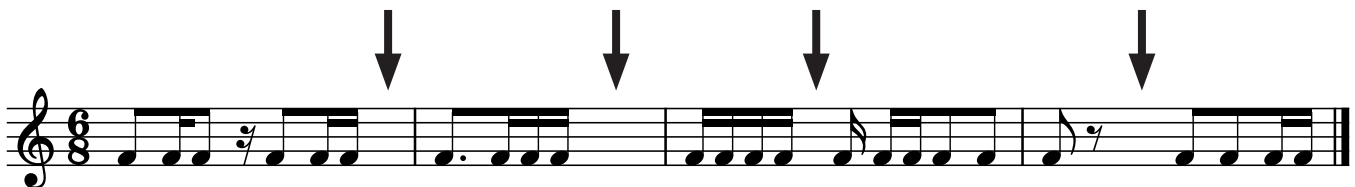
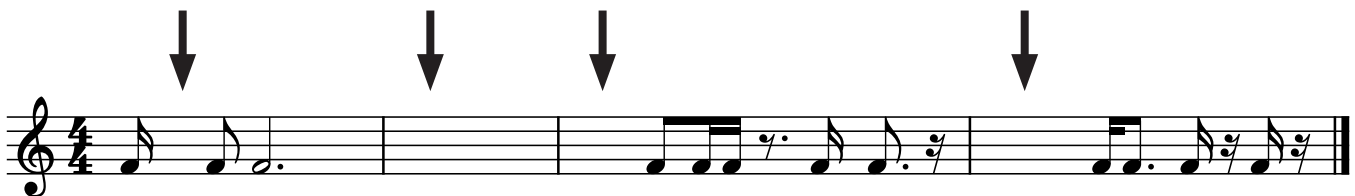
Draw an enharmonic note next to the note given using whole notes. Use accidentals as needed.

Theory Level 6 - Rhythms

Draw **one note** under the arrow to complete each measure in the given time signatures.

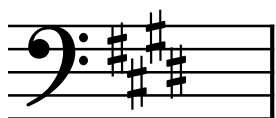


Draw **one rest** under the arrow to complete each measure in the given time signatures.



Theory Level 6 - Key Signature Identification

Write the name of the Major or minor key shown by each key signature.



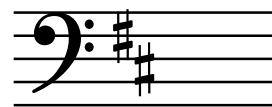
_____ Major



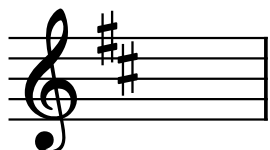
_____ minor



_____ minor



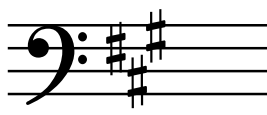
_____ Major



_____ minor



_____ minor



_____ Major



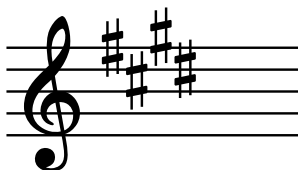
_____ Major



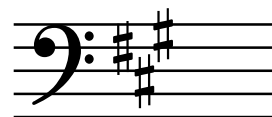
_____ Major



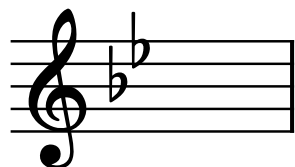
_____ Major



_____ minor



_____ minor



_____ minor



_____ Major



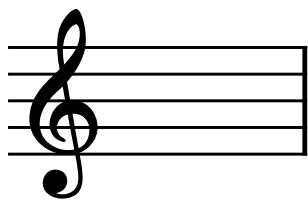
_____ minor



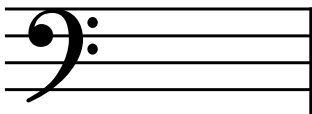
_____ Major

Theory Level 6 - Key Signature Writing

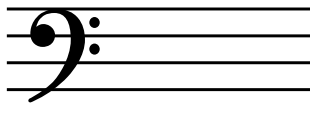
Draw the correct key signature for each Major or minor key.



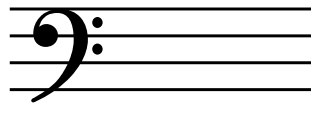
b minor



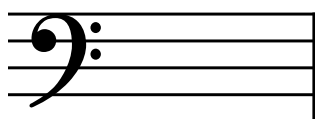
D Major



E Major



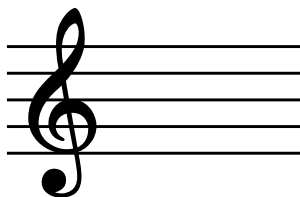
g minor



E-flat Major



B-flat Major



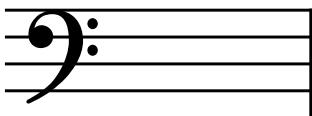
a minor



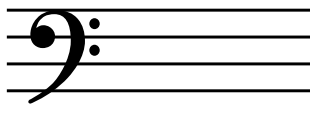
c-sharp minor



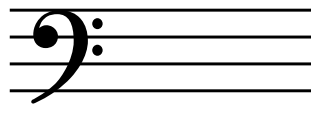
D Major



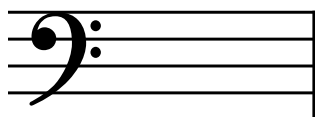
f minor



f-sharp minor



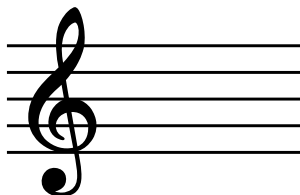
c minor



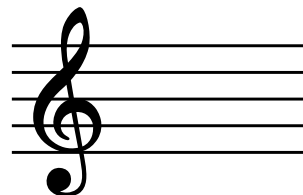
G Major



A-flat Major



E-flat Major



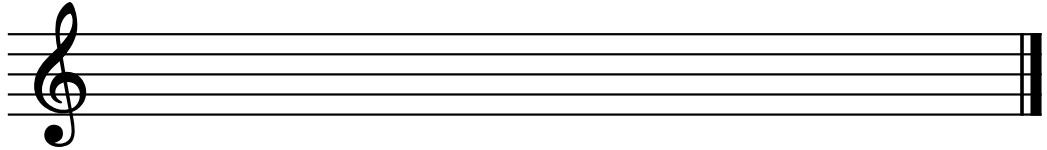
A Major

Theory Level 6 - Scale Writing

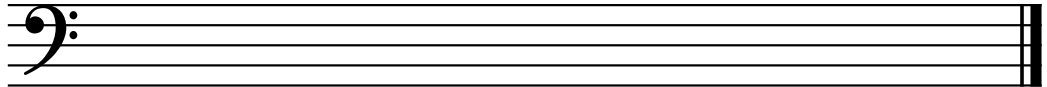
E, A-flat Major and c-sharp, f minor

Draw the scales one octave ascending and descending. Use whole notes. Use accidentals as needed. Do not use a key signature.

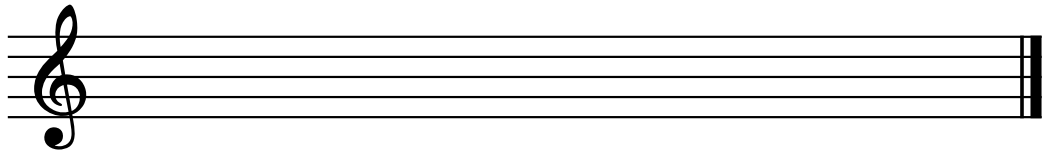
c-sharp
natural minor



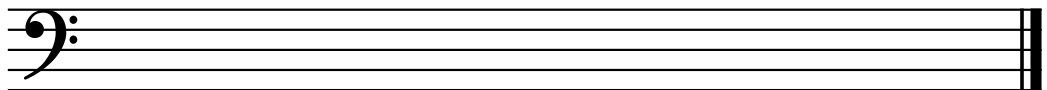
f harmonic minor



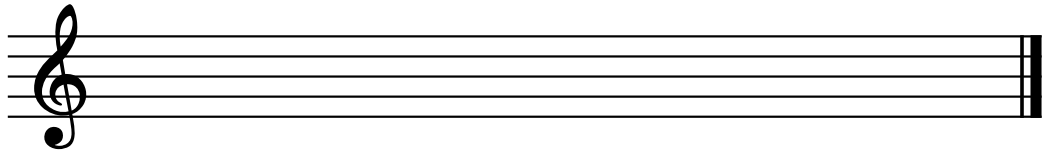
c-sharp
melodic minor



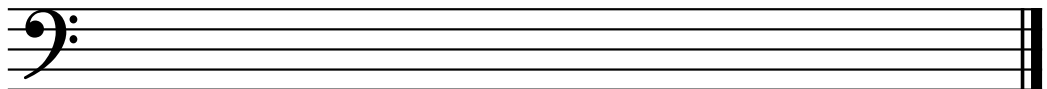
f natural minor



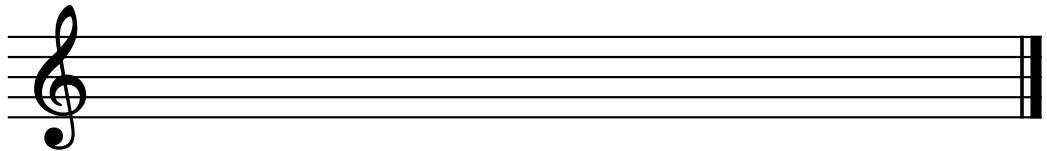
c-sharp
harmonic minor



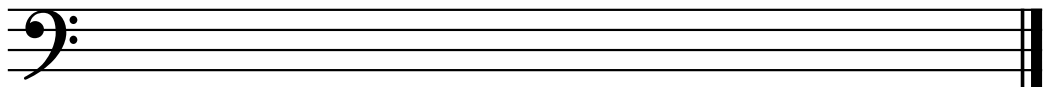
f melodic minor



E Major

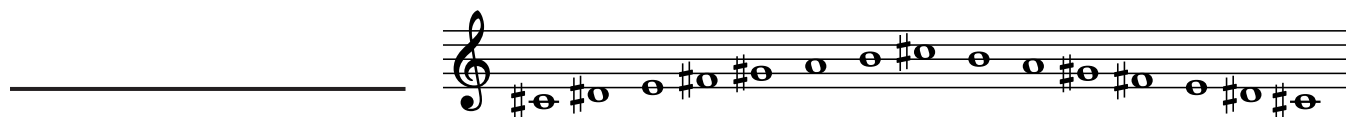
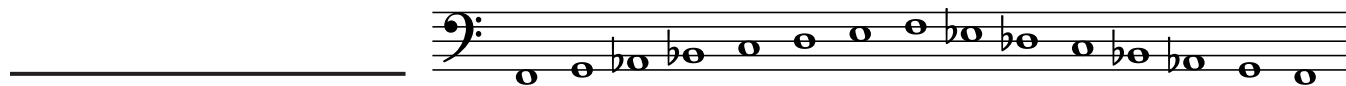
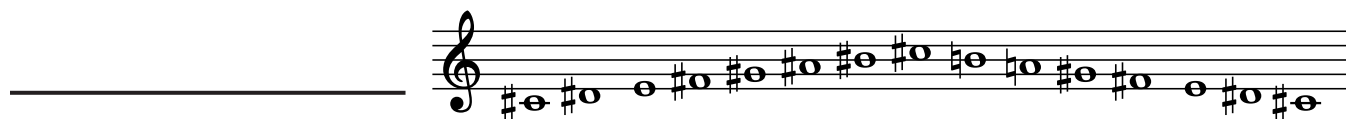


A-flat Major



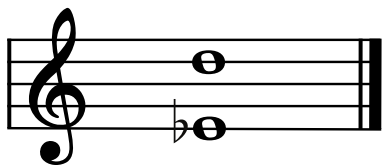
Theory Level 6 - Scale Identification

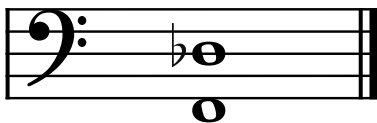
Write the name of each scale. Include Major, natural minor, harmonic minor, or melodic minor in your answer.

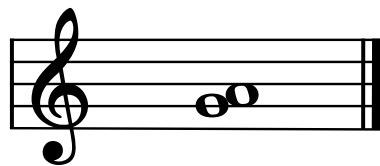


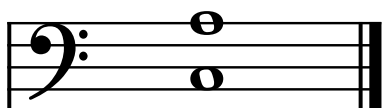
Theory Level 6 - Interval Identification

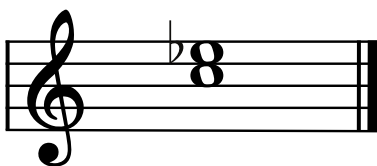
Label the intervals as Major 2nd, minor 2nd, Major 3rd, minor 3rd, Perfect 4th, Perfect 5th, Major 6th, minor 6th, Major 7th or minor 7th

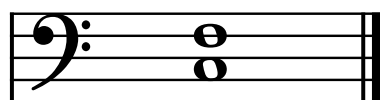


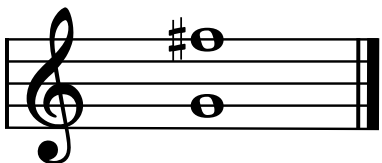




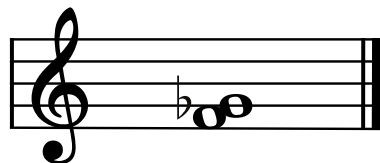


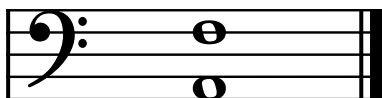


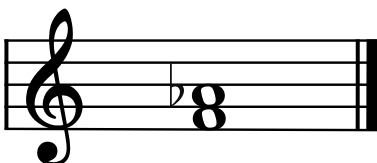


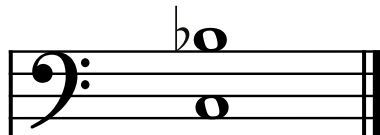






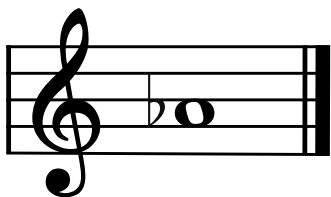




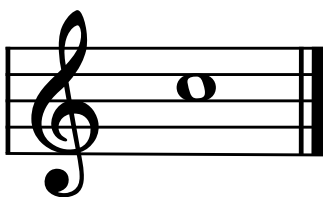


Theory Level 6 - Interval Writing

Draw the correct interval above each note using a whole note. Use accidentals as needed.



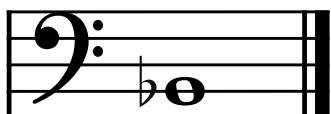
Perfect 5th



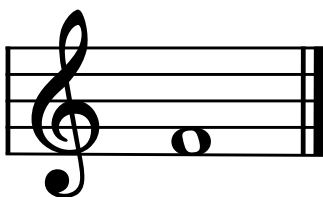
minor 2nd



Major 6th



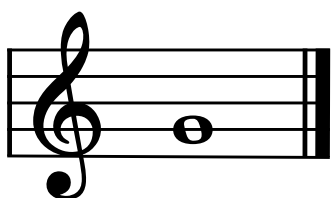
Major 2nd



minor 7th



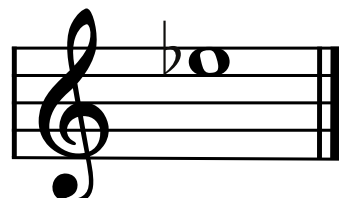
minor 3rd



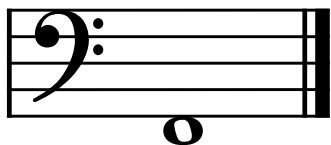
Perfect 4th



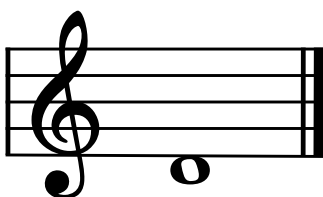
Major 2nd



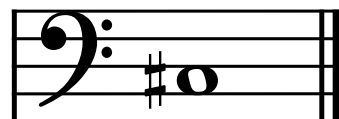
Major 7th



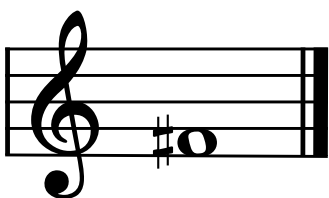
minor 2nd



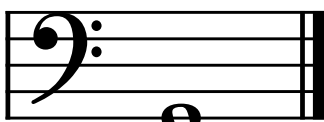
Major 3rd



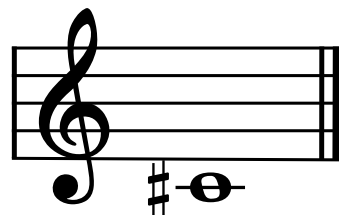
Perfect 5th



minor 3rd



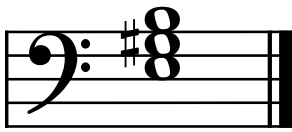
minor 6th



Perfect 4th

Theory Level 6 - Triad Identification

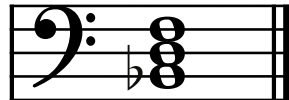
On the blank line, write the root of the triads and circle whether the triads are Major or minor.



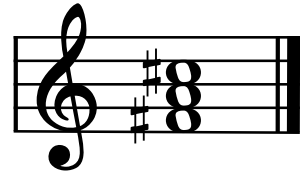
_____ Major
_____ minor



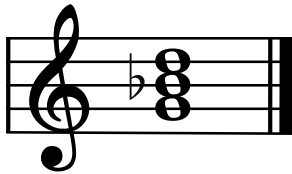
_____ Major
_____ minor



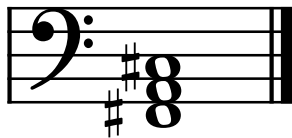
_____ Major
_____ minor



_____ Major
_____ minor



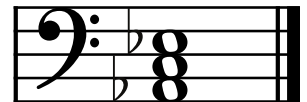
_____ Major
_____ minor



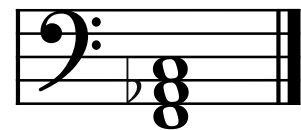
_____ Major
_____ minor



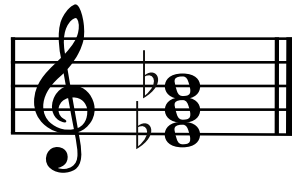
_____ Major
_____ minor



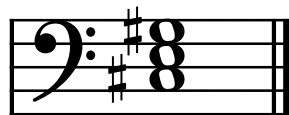
_____ Major
_____ minor



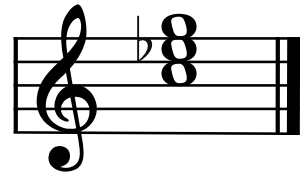
_____ Major
_____ minor



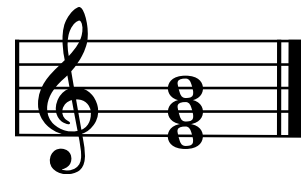
_____ Major
_____ minor



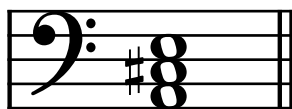
_____ Major
_____ minor



_____ Major
_____ minor



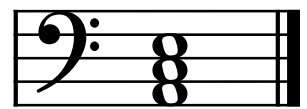
_____ Major
_____ minor



_____ Major
_____ minor



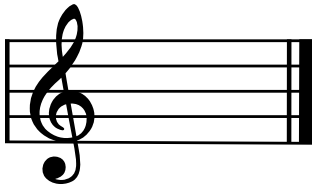
_____ Major
_____ minor



_____ Major
_____ minor

Theory Level 6 - Triad Writing

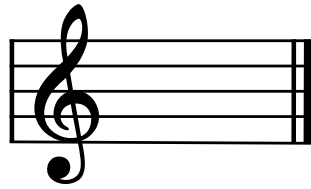
Draw the triads in root position using whole notes. Use accidentals as needed.



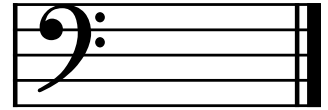
E Major



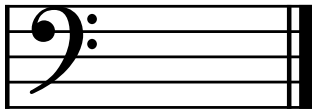
C Major



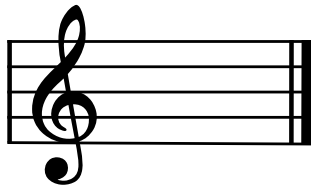
B minor



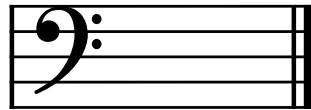
C-sharp minor



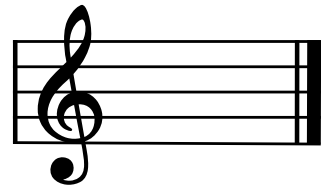
D Major



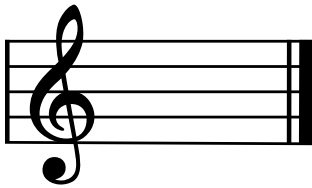
F-sharp minor



G Major



A-flat Major



C minor



A minor



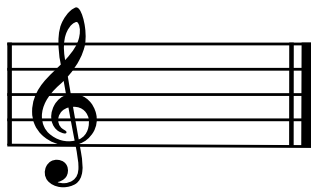
B-flat Major



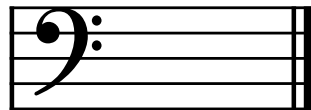
D minor



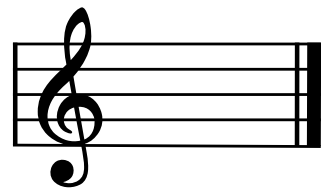
F minor



G minor



A Major



E-flat Major

Theory Level 6 - Music Symbol Drawing

Draw the correct music symbol in each box.

Dotted eighth note

Two sixteenth notes beamed

Dotted sixteenth note

Natural

Four sixteenth notes beamed

Dotted eighth rest

Fortepiano

Dotted sixteenth rest

Dotted half rest

Tre corde

Una corda

Fermata

Double flat

Dotted quarter rest

Double sharp

Accent

Diminuendo

Dominant seventh chord symbol

Treble clef

Ritardando

Theory Level 6 - Terms and Definitions

Fill in each blank with the correct word from the word list.

Word List

inversion
1st inversion triad
2nd inversion triad
agitato
leggiero

meno
meno mosso
non troppo
più
più mosso

semplice
sempre
tre corde
una corda
damper pedal

sostenuto pedal
dominant seventh
double flat
double sharp

- _____ Less
- _____ More
- _____ A rearrangement of chord tones so that the lowest note is not the root
- _____ Agitated or restless
- _____ Always
- _____ When depressed with the foot, raises the dampers and permits the strings to vibrate and sustain the tone
- _____ Raises a note two half steps (or one whole step)
- _____ A triad with the 3rd as the lowest note
- _____ Not too much
- _____ Less motion, slower
- _____ A Major triad built on the fifth scale degree with an added minor 7th above the root
- _____ Lowers a note two half steps (or one whole step)
- _____ More motion, faster
- _____ To play simply
- _____ Three strings, release soft pedal
- _____ An optional middle pedal that generally sustains notes while others are being played
- _____ One string, depress the soft pedal
- _____ Light
- _____ A triad with the 5th as the lowest note