

Theory Level 7 - Double-Sharp and Double-Flat

Note Naming and Enharmonic Notes

Write the letter name of each note on the line below. Do not use enharmonic spellings. Use accidentals as needed.

Measure 1: Treble clef, B double flat (B $\flat\flat$)

Measure 2: Bass clef, G double sharp (G $\sharp\sharp$)

Measure 3: Treble clef, A double flat (A $\flat\flat$)

Measure 4: Bass clef, F double sharp (F $\sharp\sharp$)

Measure 5: Treble clef, C double sharp (C $\sharp\sharp$)

Measure 6: Bass clef, D double flat (D $\flat\flat$)

Draw an enharmonic note next to the note given using whole notes. Use accidentals as needed.

Measure 1: Treble clef, B double flat (B $\flat\flat$)

Measure 2: Bass clef, G double sharp (G $\sharp\sharp$)

Measure 3: Treble clef, A double flat (A $\flat\flat$)

Measure 4: Bass clef, F double sharp (F $\sharp\sharp$)

Measure 5: Treble clef, C double sharp (C $\sharp\sharp$)

Measure 6: Bass clef, D double flat (D $\flat\flat$)

Measure 1: Treble clef, B double flat (B $\flat\flat$)

Measure 2: Bass clef, G double sharp (G $\sharp\sharp$)

Measure 3: Treble clef, A double flat (A $\flat\flat$)

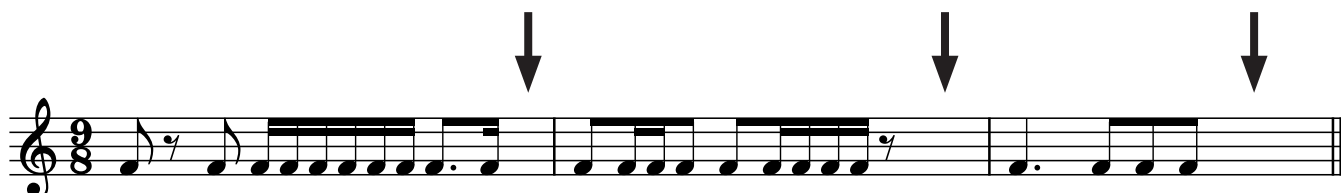
Measure 4: Bass clef, F double sharp (F $\sharp\sharp$)

Measure 5: Treble clef, C double sharp (C $\sharp\sharp$)

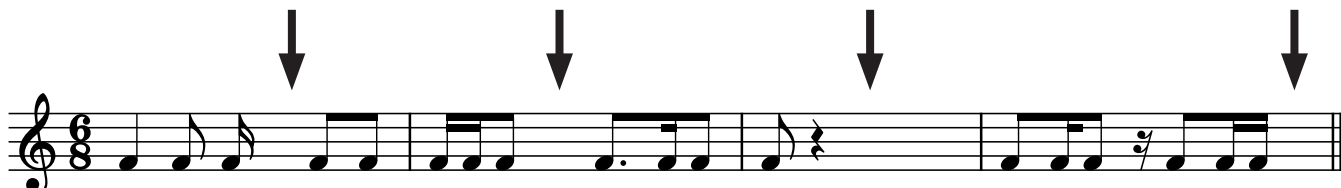
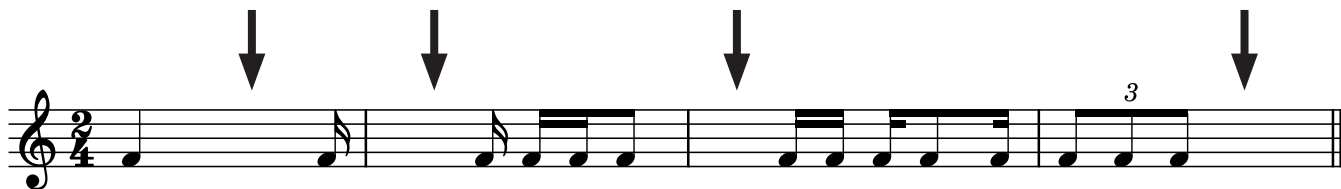
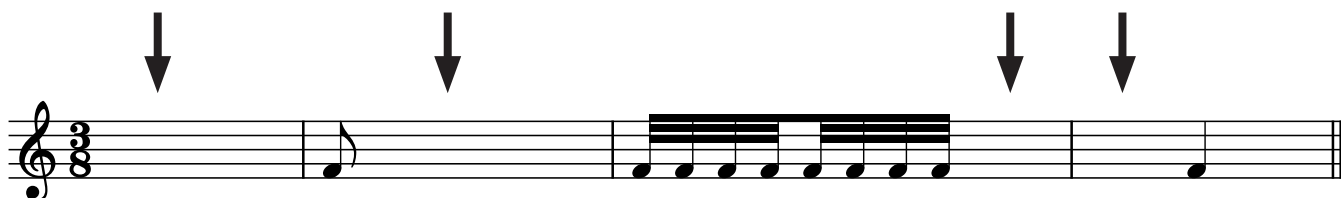
Measure 6: Bass clef, D double flat (D $\flat\flat$)

Theory Level 7 - Rhythms

Draw **one note** under the arrow to complete each measure in the given time signatures.

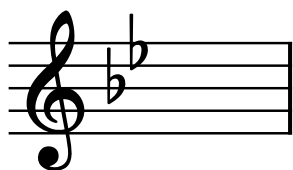


Draw **one rest** under the arrow to complete each measure in the given time signatures.



Theory Level 7 - Key Signature Identification

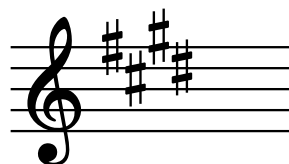
Write the name of the Major or minor key shown by each key signature.



_____ minor



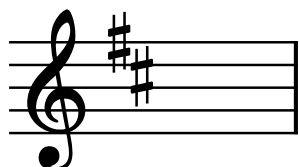
_____ minor



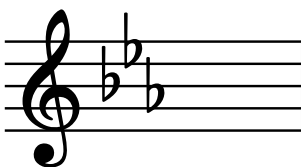
_____ Major



_____ minor



_____ minor



_____ minor



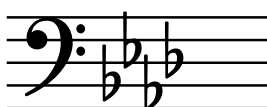
_____ Major



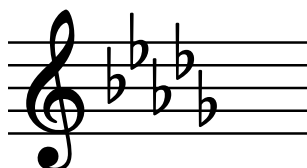
_____ Major



_____ minor



_____ minor



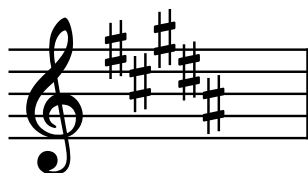
_____ minor



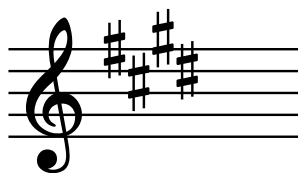
_____ Major



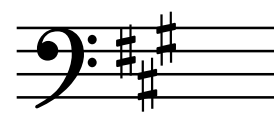
_____ Major



_____ Major



_____ minor



_____ minor



_____ Major



_____ Major



_____ minor



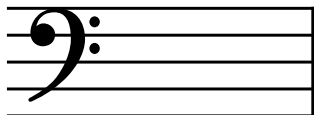
_____ minor

Theory Level 7 - Key Signature Writing

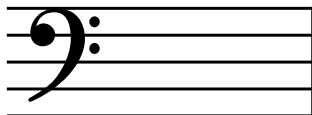
Draw the correct key signature for each Major or minor key.



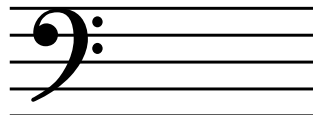
B Major



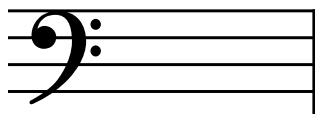
D-flat Major



E Major



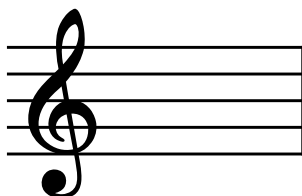
g-sharp minor



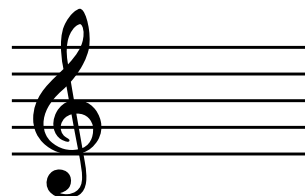
E-flat Major



B-flat Major



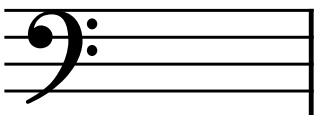
D Major



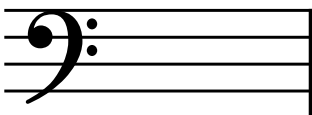
c-sharp minor



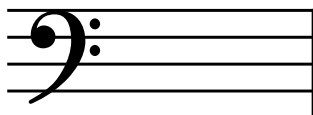
b-flat minor



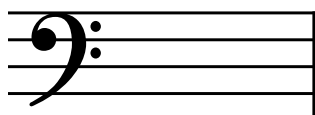
f minor



f-sharp minor



c minor



D-flat Major



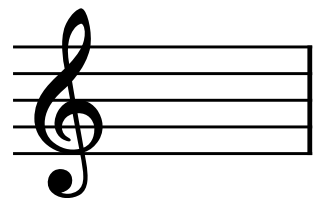
A-flat Major



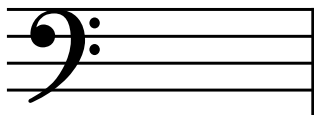
E-flat Major



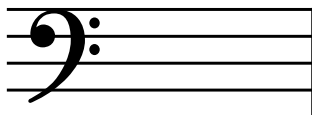
A Major



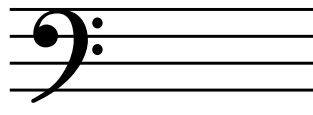
b minor



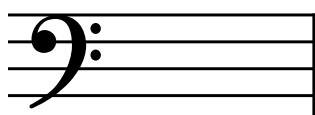
g minor



a minor



G Major



F Major



C Major



e minor



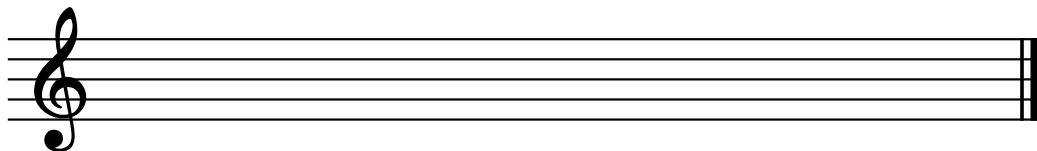
d minor

Theory Level 7 - New Scale Practice

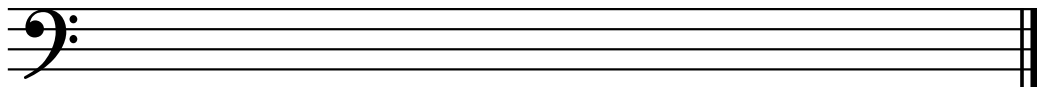
B, D-flat Major and g-sharp, b-flat minor

Draw the scales one octave ascending and descending. Use whole notes. Use accidentals as needed. Do not use a key signature.

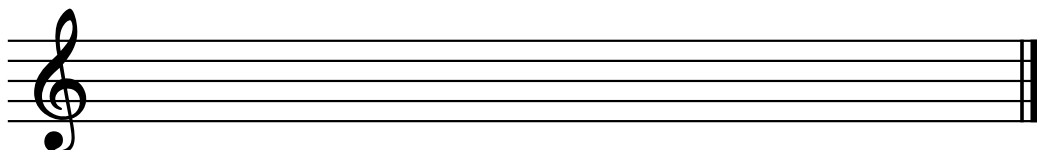
g-sharp
natural minor



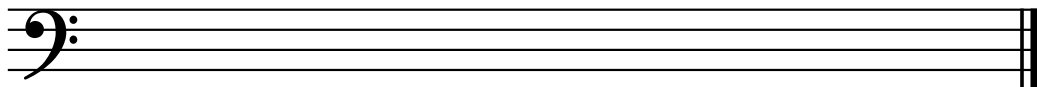
b-flat harmonic minor



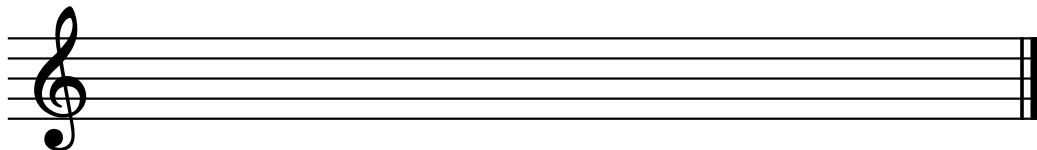
g-sharp
melodic minor



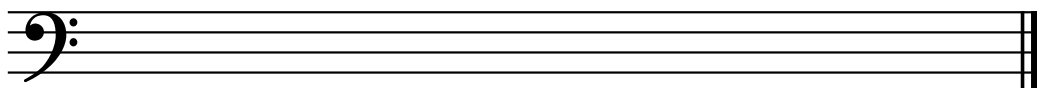
b-flat natural minor



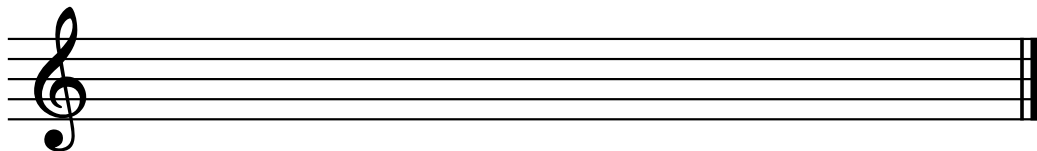
g-sharp
harmonic minor



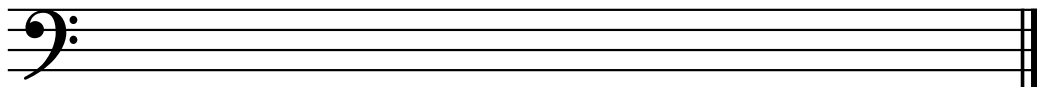
b-flat melodic minor



B Major

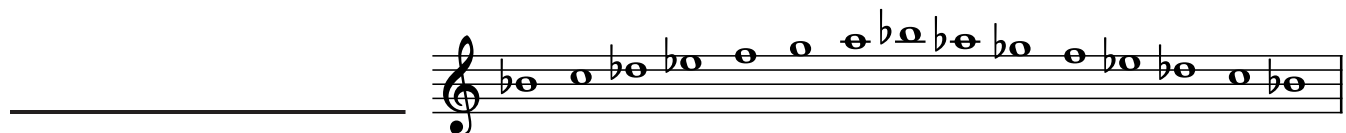


D-flat Major



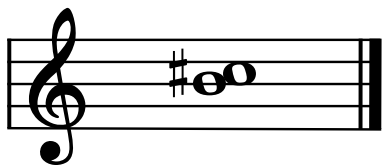
Theory Level 7 - Scale Identification

Write the name of each scale. Include Major, natural minor, harmonic minor, or melodic minor in your answer.

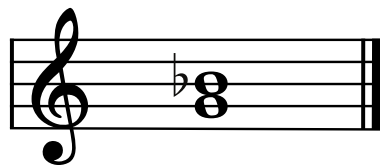


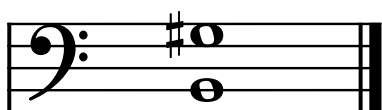
Theory Level 7 - Interval Identification Review

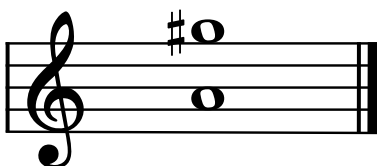
Label the intervals as Major 2nd, minor 2nd, Major 3rd, minor 3rd, Perfect 4th, Perfect 5th, Major 6th, minor 6th, Major 7th or minor 7th (no new intervals in level 9)



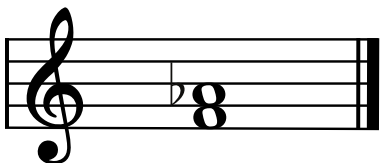


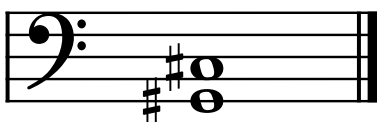


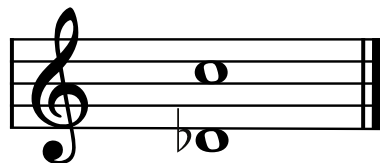




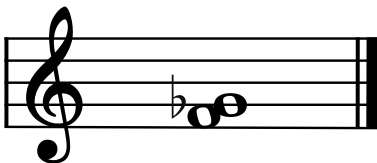


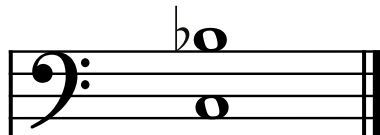






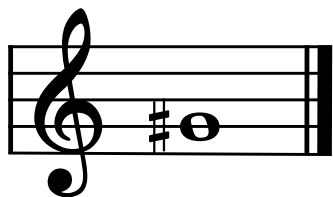




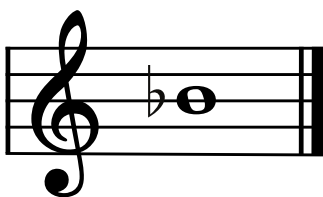


Theory Level 7 - Interval Writing

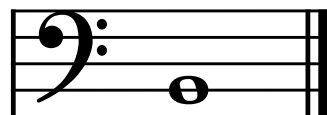
Draw the correct interval above each note using a whole note. Use accidentals as needed.



Perfect 5th



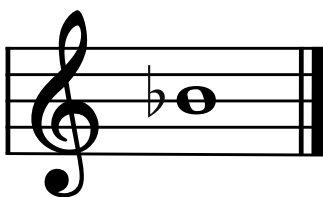
minor 2nd



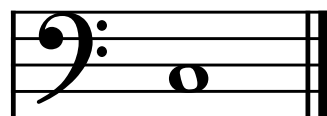
Major 6th



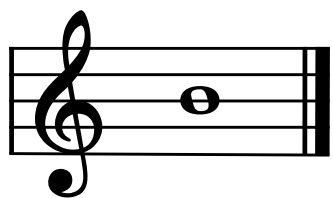
Major 2nd



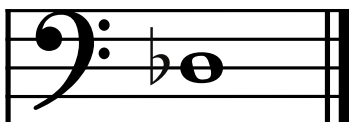
minor 7th



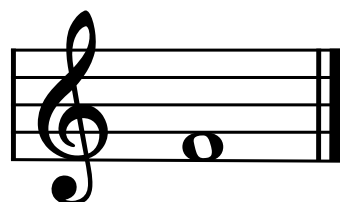
minor 3rd



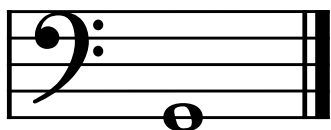
Perfect 4th



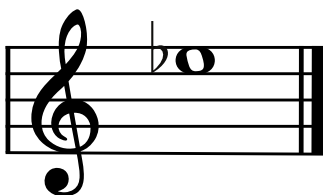
Major 2nd



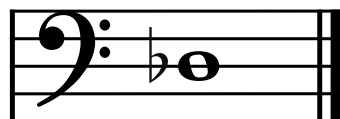
Major 7th



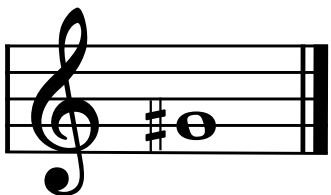
minor 2nd



Major 3rd



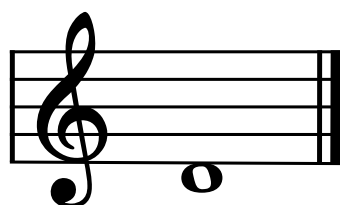
Perfect 5th



minor 3rd



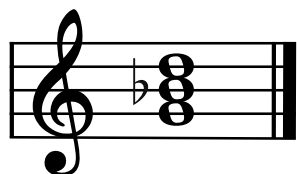
minor 6th



Perfect 4th

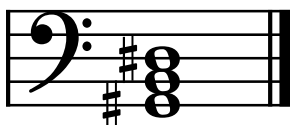
Theory Level 7 - Tonic, Subdominant, and Dominant Triads

In the provided keys, circle whether each triad is Tonic, Subdominant, or Dominant.



d minor

Tonic
Subdominant
Dominant



g-sharp minor

Tonic
Subdominant
Dominant



b minor

Tonic
Subdominant
Dominant



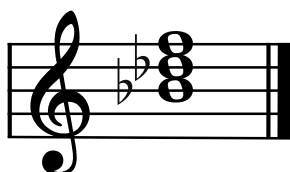
D-flat Major

Tonic
Subdominant
Dominant



E Major

Tonic
Subdominant
Dominant



f minor

Tonic
Subdominant
Dominant



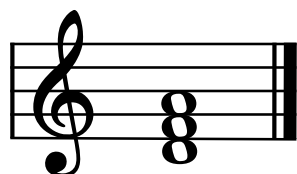
E-flat Major

Tonic
Subdominant
Dominant



f-sharp minor

Tonic
Subdominant
Dominant



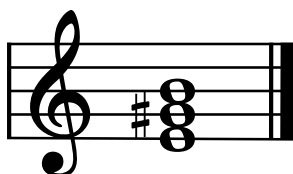
a minor

Tonic
Subdominant
Dominant



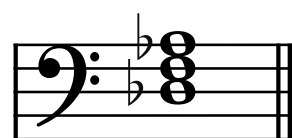
E Major

Tonic
Subdominant
Dominant



a minor

Tonic
Subdominant
Dominant

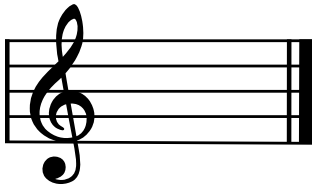


D-flat Major

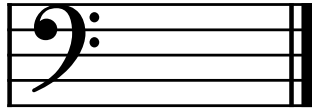
Tonic
Subdominant
Dominant

Theory Level 7 - Triad Writing

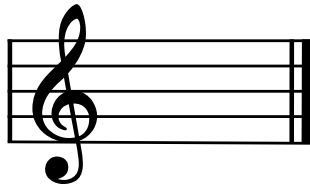
Draw the triads using whole notes. Use accidentals as needed.



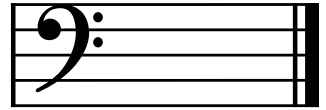
B Major
root position



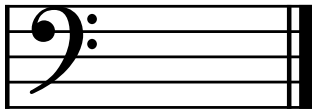
D Major
1st inversion



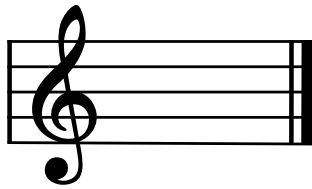
c-sharp minor
root position



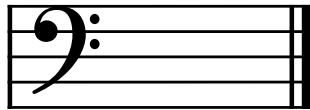
g-sharp minor
2nd inversion



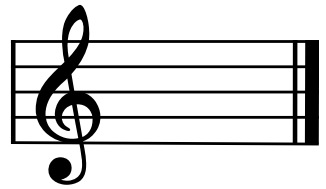
b minor
1st inversion



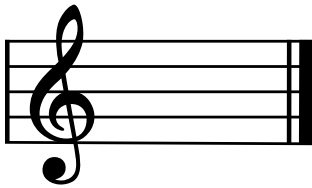
B-flat Major
2nd inversion



A Major
root position



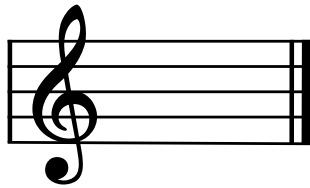
D-flat Major
2nd inversion



f minor
1st inversion



g minor
1st inversion



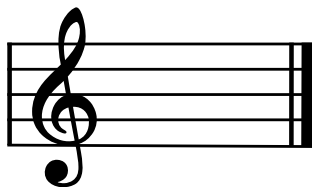
E Major
2nd inversion



c minor
root position



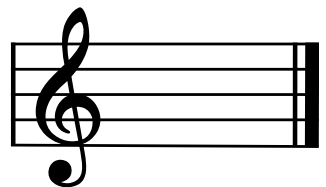
f-sharp minor
2nd inversion



b-flat minor
1st inversion



E-flat Major
2nd inversion



A-flat Major
2nd inversion

Theory Level 7 - Music Symbol Drawing

Draw the correct music symbol in each box.

Dotted eighth note

Two sixteenth notes beamed

Dotted sixteenth note

Thirty-second note

Four sixteenth notes beamed

Dotted eighth rest

Thirty-second rest

Dotted sixteenth rest

Dotted half rest

Tre corde

Una corda

Fermata

Double flat

Dotted quarter rest

Double sharp

Accent

Opus

Dominant seventh

Sostenuto

Tenuto

Theory Level 7 - Terms and Definitions

Fill in each blank with the correct word from the word list.

Word List

affettuoso	imitation	pesante	simile
augmented intervals	martellato	repetition	sostenuto
chromatic scale	opus	rubato	tenuto
grazioso	ostinato	sequence	tritone
			vivace

_____	Occurs when a melodic or rhythmic pattern is repeated
_____	Sustained
_____	Lively, quick, faster than Allegro, slower than Presto
_____	A clearly defined melodic/rhythmic pattern that is repeated persistently throughout a composition
_____	Tender, warm
_____	The immediate restatement of a melodic idea in another voice
_____	Perfect or Major intervals increased by a half step
_____	Scale composed entirely of half steps
_____	In a similar manner
_____	Diminished 5th or Augmented 4th; it divides the octave in half
_____	Held for the full duration of the note value, emphasized
_____	The repetition of melodic or harmonic material at a higher or lower pitch
_____	Expressive variation of tempo
_____	Hammered
_____	Gracefully
_____	Work, composition
_____	Heavy, weighty