

Theory Level 10 - Terms and Definitions

Fill in each blank with the correct word from the word list. This worksheet includes the new terms for Level 12 plus a review of terms from previous levels.

Word List

affettuoso
ben
cadenza
calando

cantabile
giocososo
martellato
non troppo

ostinato
pesante
picardy third
quasi

rubato
senza
scherzando
tremolo

- | | |
|-------|---|
| _____ | A cadence at the end of a minor key piece where it resolves to a Major tonic chord |
| _____ | Well, very |
| _____ | Rapid repetition of a pitch or between two pitches |
| _____ | As if |
| _____ | Brilliant, showy musical passage |
| _____ | Not too much |
| _____ | Heavy, weighty |
| _____ | A clearly defined melodic/rhythmic pattern that is repeated persistently throughout a composition |
| _____ | In a singing style |
| _____ | Joyful or playful |
| _____ | Hammered |
| _____ | Without |
| _____ | Playful |
| _____ | Expressive variation of tempo |
| _____ | Tender, warm |
| _____ | Becoming softer and slower |

Theory Level 10 - Music Symbol Drawing

Draw the correct music symbol or abbreviation in each box.

Trill

Double flat

Portato

Sforzando

Double sharp

Double-dotted
eighth note

Thirty-second rest

Double-dotted
half note

Double-dotted
quarter rest

Tre corde

Double-dotted
eighth rest

Ad libitum

Fortepiano

Augented chord
symbol

Dominant 7th
chord symbol

Fermata

Opus

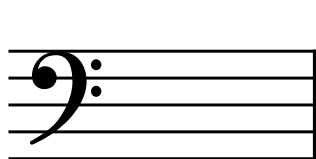
Una corda

Diminished chord
symbol

Tenuto

Theory Level 10 - Key Signature Writing Review

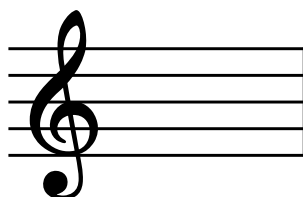
Draw the correct key signature for each Major or minor key.



C-flat Major



G-flat Major



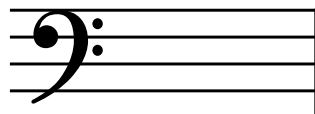
F-sharp Major



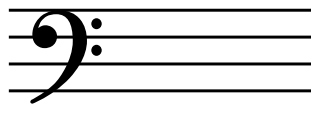
c-sharp minor



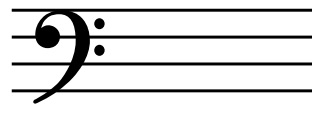
B Major



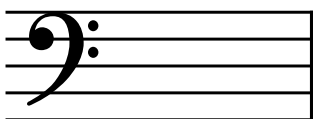
D-flat Major



E Major



g-sharp minor



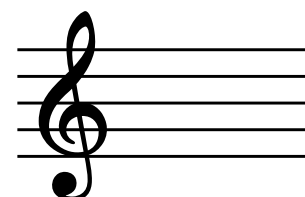
A-flat Major



A-flat Major



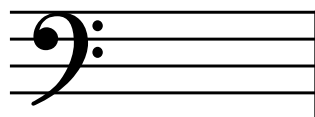
a-flat minor



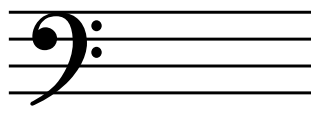
d-sharp minor



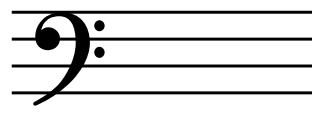
b-flat minor



f minor



C-sharp Major



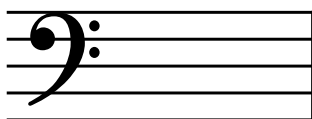
e-flat minor

Theory Level 10 - Key Signature Writing Review

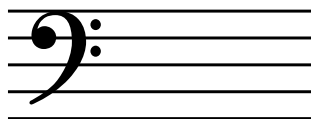
Draw the correct key signature for each Major or minor key.



g minor



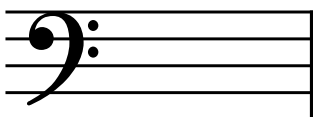
D Major



C Major



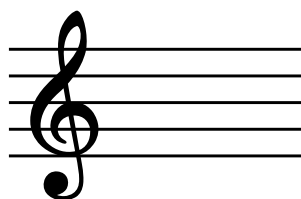
b minor



A Major



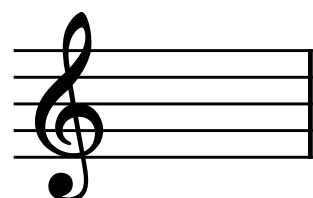
e minor



E-flat Major



G Major



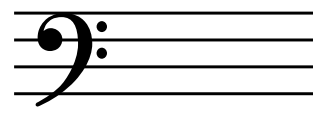
d minor



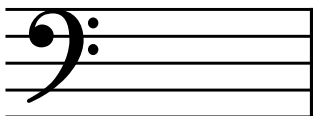
B-flat Major



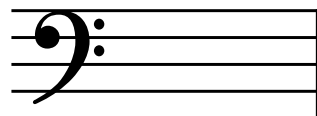
a minor



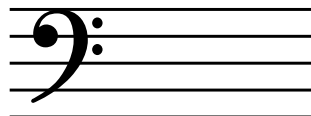
E-flat Major



c minor



F Major



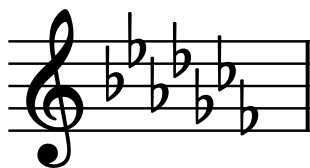
f-sharp minor



C Major

Theory Level 10 - Key Signature Identification Review

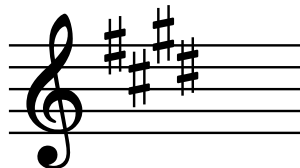
Write the name of the Major or minor key shown by each key signature.



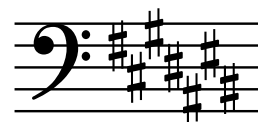
_____ Major



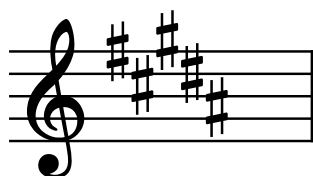
_____ Major



_____ minor



_____ minor



_____ minor



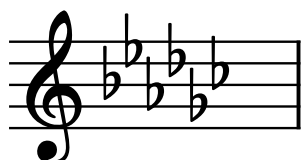
_____ minor



_____ minor



_____ Major



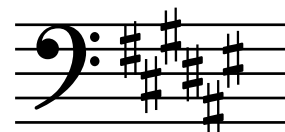
_____ minor



_____ minor



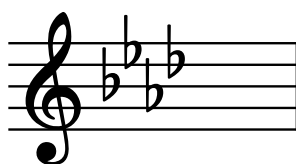
_____ Major



_____ Major



_____ minor



_____ Major



_____ Major



_____ Major

Theory Level 10 - Key Signature Identification Review

Write the name of the Major or minor key shown by each key signature.



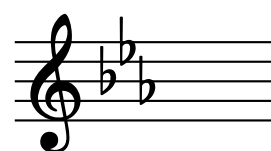
_____ Major



_____ minor



_____ minor



_____ Major



_____ Major



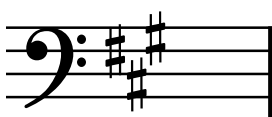
_____ minor



_____ Major



_____ Major



_____ Major



_____ minor



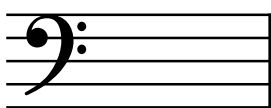
_____ minor



_____ Major



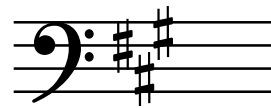
_____ minor



_____ Major



_____ minor



_____ minor