

# ASMTA THEORY LEVEL PRIMARY A - PIANO

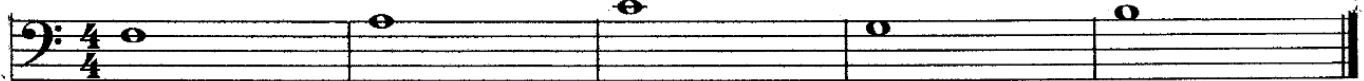
Written Score \_\_\_\_\_

Student's Name or Festival Number \_\_\_\_\_

Write the letter name of each note on the line below.

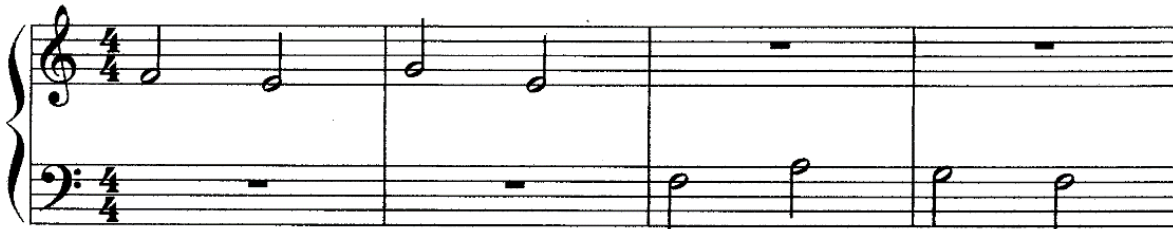


\_\_\_\_\_



\_\_\_\_\_

Write Step or Skip below each measure.



\_\_\_\_\_

Write the music alphabet.

A \_\_\_\_\_

Circle correct answer:



Line Notes

Line Notes

Line Notes

Line Notes

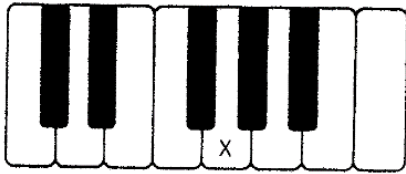
Space Notes

Space Notes

Space Notes

Space Notes

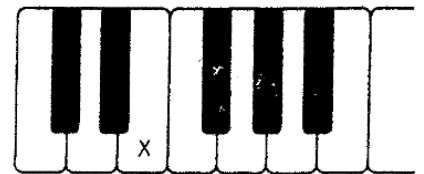
On the line below, write the letter name of the key marked on the keyboard.



\_\_\_\_\_



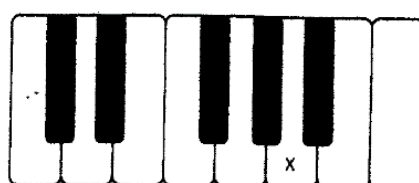
\_\_\_\_\_



\_\_\_\_\_



\_\_\_\_\_



\_\_\_\_\_



\_\_\_\_\_

Draw a line from each note to its name.



Whole note



Half note



Quarter note

In the time signature  $\frac{3}{4}$ , there are \_\_\_\_\_ beats in each measure.

In the time signature  $\frac{4}{4}$ , there are \_\_\_\_\_ beats in each measure.

In the time signature  $\frac{2}{4}$ , there are \_\_\_\_\_ beats in each measure.

The 4 on the bottom of the time signatures  $\frac{2}{4}$ ,  $\frac{3}{4}$ , and  $\frac{4}{4}$  tells us that the quarter note receives \_\_\_\_\_ beat(s).

Circle the correct answer underneath each measure.



Staccato

Moving by Step

Staccato

End

Legato

Moving by Skip

Legato

Repeat

Circle the correct sign for each musical term (word).

A. Treble Clef     $\text{basso}$      $\text{treble}$

B. Bass Clef     $\text{treble}$      $\text{basso}$

C. Forte (loud)     $p$      $f$

D. Repeat     $\{$      $||$

E. Piano (soft)     $p$      $f$