

*Written Test - Each question is worth two points.

ASMTA THEORY LEVEL ONE - PIANO

Student's Name _____

| | |
|--------------------|------------|
| Written Score | 90 |
| Aural Score | 10 |
| TOTAL SCORE | 100 |

Teacher's Name _____

Write the letter name of each note on the line below.

 E A C E G A

Draw the notes on the staff. Use whole notes.

B

D

F

Label the Major key signatures.

 F Major

 C Major

 G Major

TURN TO THE NEXT PAGE

ASMTA THEORY LEVEL ONE - PIANO

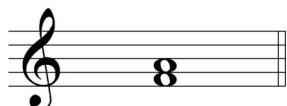
Circle the correct pattern of whole steps and half steps used in a Major scale.

WWHWWWH

WHWWWHW

WWHHWWH

Label the intervals as a second (2nd) or third (3rd).



third or 3rd




second or 2nd

Use a word from the word list to complete each sentence.

WORD LIST

| | |
|-----------|------------------|
| flat | fermata |
| triad | ritardando |
| crescendo | melodic interval |

A flat lowers a note one half step.

 is the symbol for fermata, which means to hold a note or rest for extra value.

A melodic interval is the distance between two notes which are played separately, creating a melody.


A triad is a chord of three notes, consisting of a root, 3rd, and 5th above the root.

TURN TO THE NEXT PAGE

ASMTA THEORY LEVEL ONE - PIANO

Match the terms with the definitions. Write the letter of the correct definition on the blank line.

TERMS

 C diminuendo (dim.) 

 F key signature

 E octave

 A natural

 D ritardando (rit.)

 B half step

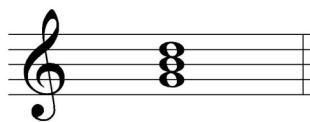
 G accidental

 H whole step

DEFINITIONS

- A. Cancels a sharp or a flat
- B. The closest distance between two notes
- C. To play gradually softer
- D. To play gradually slower
- E. An interval of eight notes
- F. Sharps or flats in a specific order and pattern after a clef sign
- G. A sharp, a flat, or a natural sign used in front of a note to change the note for one measure
- H. Equal to two half steps

Name the Major triads.



 G Major



 C Major

TURN TO THE NEXT PAGE

ASMTA THEORY LEVEL ONE - PIANO

Use the music example below to answer the following questions. The measures are numbered. Circle the correct answer or fill in the blank for each question.

1 *mf* 2 3 4

The time signature for the music example indicates there are 3 beats in each measure.

What is the meaning of the symbol circled in measure 4?

The end

To play again

What is the definition of the dynamic marking below measure 1?

Loud

Soft

Medium loud

Medium soft

The music example is written in which clef?

Treble Clef

Bass Clef

How should the notes in measures 1 and 3 be played?

Legato

Staccato

What is the interval circled in measure 3?

2nd

3rd

The line above the notes in measure 2 indicate to play the music legato or staccato?

Legato

Staccato

END OF WRITTEN EXAM

*Aural Test - Each question is worth one point.

ASMTA AURAL AWARENESS LEVELS 1 & 2

Aural Score

10

Student's Name _____

1. Same

Different

2. Staccato

Legato

3. Higher

Lower

4. Piano, *p*

Forte, *f*

5. Legato

Staccato

6. High

Low

7. Higher

Lower

8. Second

Third

9. Gradually louder

Gradually softer

10. Higher

Lower

END OF AURAL AWARENESS EXAM